



# INTERNATIONAL SCHOOL OF MANAGEMENT EXCELLENCE

*Explore. Experience. Excel.*



**EXCELLENCE IN MANAGEMENT EDUCATION SINCE 2006**

# TABLE OF CONTENTS

<b>01</b>	Mission and Vision	2
	Chairman's Message	3
	Director's Message	4
	ISME's Transformational Leaders	5-6
	Dean's Message	7
	International Leadership Message	8
	HOD (PG) & PG Programs	9
	HOD (UG) & UG Programs	10
	HOD (Research) & Ph.D. Programs	11
External Programs	12	
<b>02</b>	<b>INTERNATIONAL CREDENTIALS</b>	<b>13-24</b>
	Faculty with International Exposure	13-18
	International by Credentials and Culture	19
	What makes ISME International	20
	International Pathway Program	21
	Learning in Singapore	22-23
	Student Exchange Program, THWS-Germany	24
<b>03</b>	<b>CULTURE OF EXCELLENCE</b>	<b>25-32</b>
	Excellence is a Way of Life at ISME	25
	Recognition for Excellence	26
	World-class Smart Campus	27-28
	Excelling in other Arenas of Life	29-32
<b>04</b>	<b>CORPORATE CENTRIC</b>	<b>33-44</b>
	Gearing up for the Corporate Environment	33-34
	Sector-wise Placements	35-36
	Industry Collaborations	37
	Industry Trajectory Program	38
	Guest Speakers from the Corporates	39-40
	Recruiters Speak	41
	ISME Alumni working in Global companies	42-43
	Excellent Placements (2022-24)	44
<b>05</b>	<b>LIFE AT ISME</b>	<b>45-49</b>
	Hostel and Campus Facilities	45-46
	Student Diversity	47
	Bangalore: The Hub of Opportunities	48
	Admission Director's Message	49



## CREATING PROFESSIONALS WITH AN INTERNATIONAL OUTLOOK

ISME is a leading business school offering world class education through a student focused culture of excellence, international outlook, entrepreneurial thinking and industry alignment. ISME was founded in 2006 by alumni from CMU, Purdue and Wharton, USA.

ISME is a part of the global NVT Group, an ISO accreditation body that has certified Companies for over 30 years across 36 countries. The group also consists of National Public School (NPS), the Best CBSE school in Bangalore with 4 branches - Whitefield, East, Marathahalli and Silk Board.

### Our Mission

- ▶ Establish international partnerships and benchmarks for industry-aligned academics.
- ▶ Create an educational and scholarly academic environment focused on innovative teaching, experiential learning, data driven practical projects and applied research.
- ▶ Transform every student into a dependable and successful professional with a global perspective capable of delivering analytically grounded solutions.



### Our Vision

Our vision is to be a school of international repute for excellence in industry-focused academics and producing outstanding professionals.



## CHAIRMAN'S MESSAGE

**“THERE SHOULD BE NO LIMITS  
TO WHAT ONE CAN ACHIEVE.”**

ISME is an institution that provides a platform where there are no limits to what students can achieve. We make that happen through the three pillars of action: Providing a truly international experience, mirroring corporate work ethics, and working towards excellence in student-focussed experiential learning. With this, we see ourselves nurturing a generation of Managers and Entrepreneurs who are well-versed to think global.

**We invite you to  
Explore, Experience and Excel.**



**KG Garg**  
Chairman, NVT Group  
BTech & MTech, IIT, Roorkee,  
Bachelor's Degree from Ae.S.I., USA,  
Graduate NDI from AFTC, USA

## DIRECTOR'S MESSAGE

ISME's culture of excellence and international credentials allow students to gain an all-round learning experience.

### INTERNATIONAL CREDENTIALS

Our faculty have international exposure either through work experience in MNCs or having studied or lived abroad.

2100+ alumni are working in MNC's in India, Canada, USA, Europe, UAE, Australia, Singapore.

### CULTURE OF EXCELLENCE

ISME is a part of NVT Quality Certification, a quality certifying body for companies and academic institutions for ISO 9000. NVT Group also manages National Public School (NPS: Whitefield, East, Marathahalli and Silk Board) the top school in Bangalore.

ISME is ranked Top 33 B-School in India by TOI and India Today, 2nd leading B-School in India by GHRDC, Ranked among Top 4 Eminent B-Schools of Super Excellence by CSR, Ranked among Top 5 B-Schools in Bangalore by India Today, 9th Top B-School in South by TOI, Best School for Academic Excellence by Bangalore Management Association.

ISME has been continuously recognised for best ROI since 2006.

ISME welcomes you to a future of learning that enables you to attain your maximum potential.

**“OUR PURPOSE IS TO TRANSFORM EVERY STUDENT INTO A SUCCESSFUL PROFESSIONAL WITH A GLOBAL PERSPECTIVE”**



**Dr. Nitin Garg**  
 Director, ISME  
 BTech & MTech, IIT Bombay,  
 MBA, Carnegie Mellon University, USA  
 Ph.D., IIM Lucknow





## ISME'S TRANSFORMATIONAL LEADERS

### Governing Body

KG Garg  
Founder & Chairman,  
NVT Group

Dr. Nitin Garg  
Director, ISME

Vivek Garg  
Director, ISME

Tanuj Garg  
Director, ISME  
Member

A N Chandramouli  
Board Member-Starrag Heckert &  
CEO ANCM-Management Consulting  
Nominee from Industry

Prashanth Kuttuva  
Partner-Deloitte  
Nominee from Technology

Shivakumar Venkateswaran  
Former Chief Human Resources Officer  
IIM (Bangalore)  
Nominee from Education Industry

Dr. Rony G Kurien  
Dean-ISME  
Member Secretary

Dr. Shampa Nandi  
Principal, PG Programs  
ISME Faculty Member

Dr. S. Shyam Prasad  
Professor  
ISME Faculty Member

Dr. Nisha Thomas  
Associate Professor  
ISME Faculty Member

### Accreditation Board Representatives

Dr. Anand K Joshi  
Ex-Founder Vice Chancellor,  
CMR University  
AICTE Nominee

Dr. Sudhakara H  
Member of the Syndicate  
Bangalore University  
Nominee for Governing Council

Dr. Ashok D Hanjagi  
Professor, Bangalore University  
Nominee for Governing Council

Dr. Aisha M Sheriff  
Professor, University of Mysore  
Governing Council Member

Prof. S J Manjunath  
Professor  
University of Mysore

### Advisory Body

Pallavi Jain  
Director-Admissions, ISME

Dr. Aradhana Yadav  
Principal-UG Programs

Pronob J Chetia  
Director HR-Asia Pacific Region  
Volvo, Singapore

Dr. Giridhar J Gyani  
Director General, Association  
of Healthcare-Providers (India)

N K Palta  
CEO-Maini Global Aerospace

Jyothi Pradhan  
CEO-Kurlon

Dr. Bhimraya Metri  
Director-IIM Nagpur

K S Viswanathan  
Former VP-NASSCOM  
Former CEO-Wipro  
Former MD-Dell

Eshant Mishra  
Director-Salesforce Digital  
Experience Business  
Alumni-ISME

Dr. Rajkumar Khatri  
IAS, Former Additional Chief  
Secretary of Higher Education  
Industries and Commerce

Dr. S Devarajan  
Director-Design  
TVS Motors





## Board of Studies

Prabhu Amarnath  
Apprentice Leader | Math  
Modeling Expert | Sr. Manager  
Innovation & Learning  
Mu Sigma

Dr. S Jayaprakash  
Co Founder & CEO  
Nanobi Analytics

Dr. Naga Siddharth  
CEO  
Urban Piper

Rewa Singh Deo  
Director  
Campus Strategy-  
Talent Acquisition  
Ernst & Young GDS

Abhishek Kumar  
Co Founder & CEO  
MyGate

Neelima Jayanthi  
Partner  
Guru & Jana

Prashanth Jammi  
CFE Manager  
Controls & Advisory  
Grant Thornton

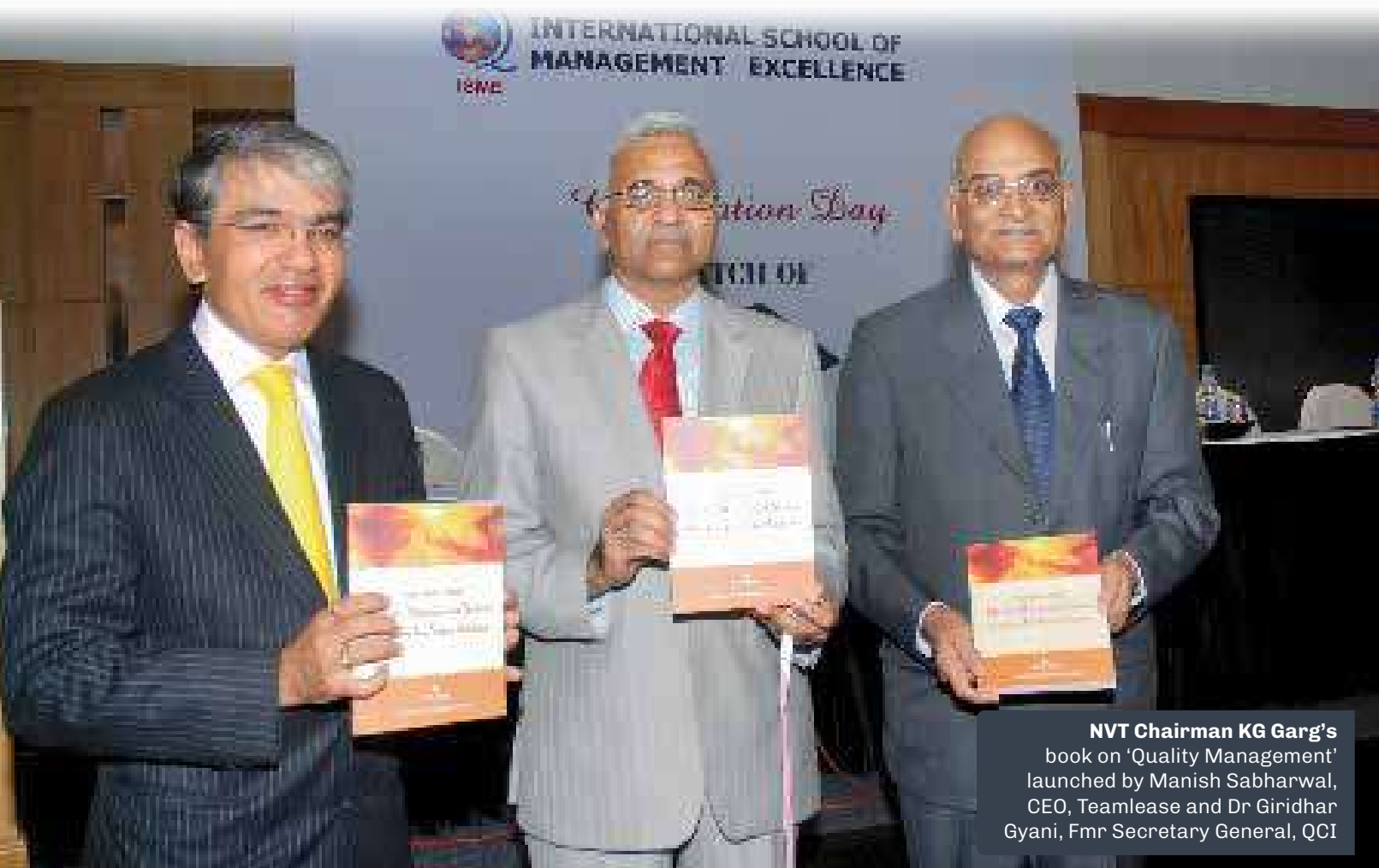
Bhanu Prabha Akella  
AVP  
JP Morgan Chase & Co.

Omprakash Pratap  
COO  
Deloitte

Sumesh Nair & Team  
Founder & CEO  
Board Infinity

Amit Kumar  
Sr. Director-Marketing  
Netradyne

Dr. Satish Puranam  
VP-Marketing,  
Reliance Retail



**NVT Chairman KG Garg's**  
book on 'Quality Management'  
launched by Manish Sabharwal,  
CEO, Teamlease and Dr Giridhar  
Gyani, Fmr Secretary General, QCI

**"IT'S OUR PERSONALISED AND STUDENT CENTRIC CULTURE THAT SETS US APART"**



**Dr. Rony G Kurien**  
Dean  
BSc., MBA (Symbiosis)  
Ph.D. (Anna University)



## **ISME is an institution with a strong focus on quality and excellence**

### **Teaching - Learning process**

ISME has been at the forefront of management education since 2006. The thrust of our teaching and learning process is to impart knowledge and skills to our students to make them industry ready. Our Curriculum is continuously updated to reflect the latest development and innovation in different fields of management through continuous and well researched training methods. Our experienced faculty help students increase their proficiency in business communication and presentation skills. This teaching ecosystem is housed in a modern building with state of the art infrastructure and advanced tech support. Our interactive approach helps to build student capabilities. We champion a culture of experimentation and entrepreneurship, where students are encouraged to take risks and push the boundaries of what is possible. In our class rooms, you will find an environment that encourages scholarly rigour and intellectual exchange. High priority is given to certification courses to enable skill foundation in emerging areas of knowledge, reflecting the current Industry trends.

### **Corporate-centric and Student-centric**

Over the years, ISME has developed strong association with corporates and business associations like NHRD, BCIC, CII and FKCCI among others. Highly placed executives share their thoughts on opportunities and challenges faced by industry. Orientation sessions, Conclaves, Panel discussions, participation in Competitions, Clubs and Labs make the process of learning very lively and transformative. Companies belonging to Consulting, Banking, IT, Digital marketing, Market Research, Business Analytics visit the campus for placement. At ISME, we nurture students to become competent leaders who have an entrepreneurial spirit, are socially responsible and have a global perspective.

We welcome you to a vibrant community at ISME, where you build partnerships and create a future guided by an outstanding team of faculty and staff.



**Vivek Garg**

Director, ISME  
B.E, MBA,  
Purdue University, USA  
(Ph.D. - ISB)

**A PRACTICAL WAY OF TEACHING WITH ACADEMIC RIGOUR**

It is generally said that management cannot be taught but learnt. The ISME programs impart education through a fine blend of theory and practice. Real-time situations created through management games, guest lectures, business excellence series and academic rigour through classroom sessions help students relate concepts to practice.

**EDUCATION EXPERIENCE OF A LIFETIME**

The entire faculty and team at ISME are committed to provide you with an educational experience of a lifetime. You will be equipped with the qualities necessary for future business leadership. Our team-based learning approach emphasizes an advanced understanding of strategy, leadership and management to ensure maximum returns on your educational investment.

**Tanuj Garg**

Director, ISME  
MBA, Wharton School of Business,  
MS, Carnegie Mellon University, USA



**Dr. Shampa Nandi**

Professor & Principal  
Post Graduate Programs  
MSc.,MBA, Ph.D. (IIT Dhanbad), UGC-NET  
PGPDSBA, University of Texas, USA

**FREEDOM TO EXPLORE**

We expose our students who hail from over 26 states across India and from overseas to the dynamics of corporate environment and global business challenges. This is done through regular interaction with senior management of corporates, experiential learning assignments, latest cases, library resources, varied pedagogies and training workshops which are delivered in our state-of-the-art campus.

ISME prides itself in providing personalised attention and we assure you of a very fruitful and enriching learning experience.

**ISME offers the following Post Graduate course**

Post Graduate Diploma in Management (AICTE Approved, NBA Accredited, Equivalent to MBA by AIU) + International Business Program, Singapore

Major Specialisation (Any one)	Minor Specialisation (Any one)	Additional Minor Specialisation	Value Added Industry Certifications
<ol style="list-style-type: none"> <li>Marketing</li> <li>Finance</li> <li>Human Resource</li> <li>Business Analytics</li> <li>International Accounting (US CPA)</li> </ol>	<ol style="list-style-type: none"> <li>Digital Marketing</li> <li>Fintech</li> <li>Information &amp; Cyber Security</li> <li>People Analytics</li> </ol>	<p>International Business (Part of International Study Program, Singapore)</p> <p>Management Development Institute of Singapore (MDIS)</p>	<ol style="list-style-type: none"> <li>KPMG 6 Sigma Certification</li> <li>Financial Modeling and Valuation by Grant Thornton</li> <li>Advanced Excel/Python/Power BI</li> <li>AI for Business Professionals</li> <li>HR Analytics</li> <li>Social Media Marketing</li> <li>Marketing Analytics Mastery</li> <li>Personal Grooming and Soft skills Training</li> <li>Experiential Learning: ACE (Attitude, Business Communication, Corporate Etiquette)</li> </ol>

**ISME School of Technology Management offers**

Masters in Computer Application (Bangalore University, AICTE Approved)

Core Papers	Electives	Additional Minor Specialisation (Optional)	Value Added Industry Certifications
<ul style="list-style-type: none"> <li>→ The Art of Programming</li> <li>→ Data Structures</li> <li>→ Object Oriented Programming</li> <li>→ Database Management Systems</li> <li>→ Software Engineering</li> <li>→ Artificial Intelligence</li> <li>→ Unix</li> </ul>	<ul style="list-style-type: none"> <li>→ Machine Learning</li> <li>→ Big Data &amp; Analytics</li> <li>→ Cryptography &amp; Network Security</li> <li>→ Cloud Computing</li> <li>→ Web Programming</li> <li>→ Mini and Main Project</li> </ul>	<p>International Business (Part of International Study Program, Singapore)</p> <p>Management Development Institute of Singapore (MDIS)</p>	<ol style="list-style-type: none"> <li>Programming Essentials in Python by CISCO NetAcad</li> <li>Networking Essentials by CISCO NetAcad</li> <li>Azure AI Engineer Associate by Microsoft</li> <li>Amazon Web Services (AWS) Cloud Architecting by Amazon</li> </ol>

**Dr. Aradhana Yadav**

Professor & Principal - UG Programs  
MBA, M.Com, PGDM, Ph.D. (UPRTOU, Allahabad)  
Ex-GE, Dell, ICICI Bank

**SPARK YOUR IMAGINATION**

We at ISME believe that our students will emerge as assets to their future organizations. The Institute has established academic collaborations, collaborative research, student exchange programs, value added labs, workshops and Industry visits. Our UG programs ensure quality education, innovation and creativity which makes the students industry ready.

**ISME offers the following Under Graduate courses****Bachelor of Business Administration (Bangalore University, AICTE Approved) + International Business Program, Singapore**

Major Specialisation (Any one)	Minor Specialisation	Value Added Industry Certifications
<ol style="list-style-type: none"> <li>1. Finance</li> <li>2. Data Analytics</li> <li>3. Marketing</li> <li>4. Human Resource</li> <li>5. International Business</li> </ol>	<p>International Business (Part of International Study Program, Singapore)</p> <p>Management Development Institute of Singapore (MDIS)</p>	<ol style="list-style-type: none"> <li>1. Business Tools- Word, Excel, Power Point</li> <li>2. Python &amp; its application in HR, Marketing &amp; Finance</li> <li>3. Data Visualization through Tableau</li> <li>4. Data Analysis using MS Excel</li> <li>5. Digital &amp; Social Media Analytics</li> <li>6. Financial Planning &amp; Investment Management</li> </ol>


**Bachelor of Commerce (Bangalore University) + International Business Program, Singapore + ACCA + BSc-International Finance (Queen Margaret University, UK)**

Major Specialisation (Any one)	Minor Specialisation	Additional Minor Specialisation	Value Added Industry Certifications
<ol style="list-style-type: none"> <li>1. Accounting &amp; Taxation</li> <li>2. Banking &amp; Finance</li> <li>3. Marketing &amp; Human Capital</li> <li>4. Business &amp; Big Data Analytics</li> </ol>	<p>International Business (Part of International Study Program, Singapore)</p> <p>Management Development Institute of Singapore (MDIS)</p>	<ol style="list-style-type: none"> <li>1. International Accounting (ACCA, UK)</li> <li>2. BSc - International Finance (Queen Margaret University, UK)</li> </ol>	<ol style="list-style-type: none"> <li>1. Business Tools- Word, Excel, Power Point</li> <li>2. Python &amp; its application in HR, Marketing &amp; Finance</li> <li>3. Data Visualization through Tableau</li> <li>4. Data Analysis using MS Excel</li> <li>5. Digital &amp; Social Media Analytics</li> <li>6. Financial Planning &amp; Investment Management</li> </ol>

**ISME School of Technology Management offers****Bachelor in Computer Application (Bangalore University) + International Business Program, Singapore**

Major Specialisation (Any one)	Minor Specialisation	Value Added Industry Certifications
<ol style="list-style-type: none"> <li>1. Data Science</li> <li>2. Full Stack Development</li> <li>3. AI &amp; ML</li> </ol>	<p>International Business (Part of International Study Program, Singapore)</p> <p>Management Development Institute of Singapore (MDIS)</p>	<ol style="list-style-type: none"> <li>1. Business Tools- Word, Excel, Power Point</li> <li>2. Digital &amp; Social Media Analytics</li> <li>3. Programming Essentials in Python by CISCO NetAcad</li> <li>4. Networking Essentials by CISCO NetAcad</li> <li>5. Azure AI Engineer Associate by Microsoft</li> <li>6. Amazon Web Services (AWS) Cloud Architecting by Amazon</li> </ol>



A portrait of Dr. Nisha Mary Thomas, a woman with dark, curly hair, wearing a blue saree with a white and gold pattern. She is smiling and looking towards the camera. The background is a blurred outdoor setting with greenery and a white building.

**Dr. Nisha Mary Thomas**  
Head (Research)  
B.Com (Hons),  
PGDBM, Ph.D. (IIT Delhi)

## EXCELLENCE IN RESEARCH

The objective of the Research Department is to strengthen research and innovation practices across specializations. Our institution is an approved Research Centre of University of Mysore for Ph.D. Program and Fellow Program in Management (FPM) by AICTE. Over 50 Scholars are pursuing their Ph.D./ FPM program in ISME.

Internal research colloquiums are encouraged to promote and provide suggestions among the peer group. The faculty members write blogs on contemporary areas of management research.

The institution conducts an International conference every year with the theme "Contemporary Issues in Management" to promote research. Many international speakers, thought leaders, research scholars and participants share their ideas. The Institution provides opportunity to young researchers to contribute research articles and publish it after peer review in the online journal "Xplore". The centre promotes collaborative research, joint publications and takes up funded research projects.

### ISME offers the following Doctoral Programs

- ▶ **Ph.D. in Management, University of Mysore**
- ▶ **Fellow Program in Management (FPM), AICTE approved**



**Dr. Purnajit Chatterjee**  
 Head - External Relations & External Programs  
 PGDM (IIM-A) M.Sc (DU)  
 D.Litt. (University of Central America)  
 Ex VP - IBM Asia Pacific Region

## STRENGTHEN THE SKILLS OF PRACTICING MANAGERS & IMPROVE COMPANY PERFORMANCE THROUGH CONSULTING

ISME conducts a variety of Executive Training and Management Development Programs (MDP) for working professionals. It provides an ideal platform for gaining new insights in order to be successful in an increasingly competitive & complex corporate environment. These certification programs are aimed at broadening the outlook and strengthening the skills of practicing managers.

### ISME offers the following External Programs

Corporate Training /Management Development Programs	Executive Post Graduate Programs
<ul style="list-style-type: none"> <li>• Retail Sales Executive Training</li> <li>• Certificate in Visual Merchandising</li> <li>• Demand Forecasting under Uncertainty (Predictive Modeling)</li> <li>• Effective Inventory Management</li> <li>• Warehousing &amp; Logistics Management</li> <li>• Communication for Business Effectiveness</li> <li>• Finance for Decision Making</li> <li>• Analytics for Business Insights</li> <li>• Quality &amp; Six Sigma for Business Process Improvement</li> <li>• Leadership Development Programs</li> </ul>	<p><b>US CPA Prep:</b> These programs are designed to build the soft and functional skills needed for managerial positions, also preparing the students to take all the four exams of the US-CPA licensing process. The Program is delivered by experienced academicians &amp; industry practitioners. The course material is provided by Becker's international CPA review materials.</p> <ul style="list-style-type: none"> <li>• Weekend PGPM (International Accounting) + US CPA</li> <li>• Weekend PGDM (International Accounting) + US CPA</li> </ul> <p><b>Executive PGDM for Manufacturing:</b> This is our focused program aimed at imparting managerial skills for mid-level manufacturing professionals</p>
Management Development Programs	Corporate Consulting
<p>ISME's Business Excellence Consulting Practice enables you to take your organization to the next level with a focus on optimisation using data analytics. Over the last one year, we have successfully conducted training and MDP programs for clients like Titan (Tanishq), Celio, TVS, Bosch, Volvo &amp; Grant Thornton.</p>	<p>ISME offers consulting across Marketing, HR and Supply Chain to Businesses. We have undertaken consulting projects with Kesoram Industries, Asset Planning Services, USA, Krismar Marbles and others in areas like:</p> <ul style="list-style-type: none"> <li>• Supply Chain Optimization</li> <li>• Workforce Optimization</li> <li>• Marketing Mix Optimization</li> <li>• Business Process Optimization</li> </ul>
ISME Skills Academy (ISA) Blended / Online Program	Our Collaboration Partners
<p>ISME Skills Academy started with an objective to enable youth to be job ready. AICTE approved PGDM-Retail &amp; Logistics has been launched in association with the Retailers Association of India (RAI).</p>	





## LEARN FROM ACCOMPLISHED FACULTY WITH INTERNATIONAL QUALIFICATIONS AND WORK EXPERIENCE

Our full-time faculty have lived and worked in countries like USA, UK, China, Mexico, Singapore, Malaysia, UAE, Australia, Africa, France, Germany, Turkey and Bangladesh.

They come with rich experience in global multinationals like HSBC, Ocwen Financials, Deloitte Consulting, Dylon Consulting, Marico, Australian Trade Commission, Wipro, Dell, GE, Axis Bank, ICICI Bank, Infosys, HCL Tech Flipkart, Samsung, Al- Muftah Group, Toyota Kirloskar Motor, West Corp, KPMG, EY, Kantar, IDC, HLL, Yokogawa, Cholamandalam, Nokia, Bajaj Allianz, IBM among others.

ISME's culture of open-door policy and individualised attention with faculty to student ratio of 1:12 helps in the transformation of the students.



*"The faculty at ISME are highly qualified and have global exposure who guide students in gearing up for the Corporate World.*

*Individual mentoring by faculty helps students in dealing with academics, social and personal issues"*

**Hitansh Lakkad**  
**PGDM 2022-24**



Hitansh Lakkad's  
Testimonial





## PERSONALISED MENTORING: A HOLISTIC SUPPORT SYSTEM

Mentoring has a profound effect on students' lives by providing personal guidance, academic counseling and support, particularly for those studying away from home.

Personal mentoring addresses students' emotional well-being, personal growth, academic progress thereby creating a support system to help them through challenges. Academic counseling aids in course selection, career planning and study strategies helping students set and achieve goals.

**Semester I** - We have group mentoring sessions, where each Faculty will be assigned 10 to 15 students. This helps students to know about their peers and ensure peer learning. The students will understand the academic system and learn in cohesive groups. Various activities are organised which help students build team spirit with skill enhancement such as communication, presentation, time management etc.

**Semester II** - In the second semester health & well-being sessions are organized ensuring holistic development. The sessions would be on Emotional Intelligence, Nutrition Management, Stress Management, Risk management etc.

**Semester III - Semester VI** - Students can book time slots of their choice to meet a respective faculty and talk to them for 30 minutes.

### Outcomes of Mentorship for Students

- ▶ Enhanced self-confidence and resilience.
- ▶ Improved academic performance and study habits.
- ▶ Clearer career goals and pathways.
- ▶ Greater emotional stability and personal well-being.
- ▶ Development of strong interpersonal and problem-solving skills.

Mentorship equips students with the tools and confidence to succeed both in their academic and personal lives, paving the way for future success.

## MARKETING & STRATEGY



**Dr. HARITHA S**  
B Tech, MBA , Ph.D.  
(NITK, Surathkal)



**Dr. NITIN GARG**  
Director, ISME  
B.Tech & M.Tech,  
IIT Bombay,  
MBA, CMU, USA,  
Ph.D.(IIM Lucknow)



**Dr. RONY G KURIEN**  
BSc., MBA (Symbiosis)  
Ph.D.(Anna University)



**Dr. SHAMPA NANDI**  
MSc, MBA, UGC-NET  
Ph.D., IIT (Dhanbad)  
PGPDSBA  
University of Texas



**Dr. SHASHIKALA PATIL**  
BA (English), MA (English)  
MBA (Marketing) Ph.D.



**Dr. SHYAM PRASAD**  
MBA, Ph.D.,  
UGC-NET



**Dr. PURNAJIT CHATTERJEE**  
BSc (Hons)  
MSc Operation research  
PGDM (MBA)



**Dr. SWETA BHASIN**  
MBA (Padma University)  
Ph.D. (VKSU)



**INDRANIL DUTTA**  
B.Tech (Hons), PGDM



**VIVEK GARG**  
B.E, MBA,  
Purdue University, USA  
(Ph.D. - ISB)



**JATINDER MOHAN**  
MBA  
(Bangalore University)



**MANOHAR D. RAO**  
B.Tech (IIT Madras),  
PGDM IIM (Ahmedabad)



**RAGHURAMAN**  
B.E, PGDM,  
IIM (Bangalore)

## FINANCE & ECONOMICS



**AMRUTHA KP**  
M.Com, NET + CNA



**GEETA ASHOK**  
B.Com, PGDBA,  
Associate Company Secretary  
(Intermediate)



**Dr. NISHA MARY THOMAS**  
B.Com (Hons), PGDBM,  
IILM, Ph.D., IIT (Delhi)



**ROHITH R**  
B.Com, M.Com,  
M.Phil, UGC-NET



**SHASHI REKHA B V**  
B.Com, M.Com & MBA  
M. Phil, (Ph.D.)



**TANUJ GARG**  
MS (Carnegie Mellon  
University), MBA  
(Wharton Business School, USA)



**KIRAN KUMAR, K V**  
M.Com, PGDBA, (Ph.D.)  
(Finance & Marketing)



**RISHIRAJ DASGUPTA**  
B.E, PGDM,  
IIM (Calcutta)



**Dr. SUDHINDRA BHAT**  
M.Phil, MBA,  
Ph.D. (Finance)



**AMITAVA SENGUPTA**  
B.Tech (IIT Kharagpur)  
PGDBM (IIM Ahmedabad)



**INDRANIL SAHA**  
B.E, PGDM,  
IIM (Calcutta)



**LAVANYA S**  
B.E, MBA



**PRABHA SHANKAR**  
CA, CS, DIP- IFR,  
ACCA, UK



**RAKHI AGRAWAL**  
CA, M.Com, B.Ed



## HUMAN RESOURCE MANAGEMENT



**Dr. ARADHANA YADAV**  
M.Com, PGDBM, MBA  
Ph. D.



**PALLAVI JAIN**  
PGDM, PG in HRM  
(Wharton Business School, USA)



**Dr. M RAMESH KUMAR**  
BSc, MBA, Ph.D.



**Dr. RONY G KURIEN**  
BSc, MBA (Symbiosis)  
Ph.D. (Anna University)



**SHIJIMOL E A**  
BSc, MSc, EMBA,  
UGC NET, (Ph.D)



**Dr. NIDHI ARORA**  
MA, Ph.D., MBA



**Dr. SINDHU SHANTHA NAIR**  
BSc (Maths), M.Phil,  
Ph.D., MBA, MSc  
Fellowship, HRM



**SRIRAM PRABHAKAR**  
B.E, PGDBA  
(Ph.D.- University of Mysore)



**Dr. RASHMI JHA**  
BSc, PGDHRM,  
PGDEMA, Ph.D.



**H.S. MISHRA**  
MSc, LLB,  
Diploma in Management  
(MDI Gurgaon)



**PREEJA SREEDHAR**  
PGDMCJ, PGHRM



**SURESH MENON**  
BSc, LLB, PGDPM



**SHIKHA NAG**  
MBA  
Soft Skills Trainer (SQA)

## BUSINESS ANALYTICS



**KAVITHA K N**  
B. Tech, M.Tech  
(Ph.D.- PES University)



**ANAND KUMAR**  
B. Tech, PGDBS  
(Manipal University)



**RAJENDRA DESAI**  
B.Tech,  
MS (Virginia Tech, USA)



**Dr. SHAMPA NANDI**  
MSc, MBA, Ph.D.,  
IIT (Dhanbad) PGPDSBA,  
University of Texas



**Dr. SHYAM PRASAD**  
MBA, Ph.D.



**INDRANIL DUTTA**  
B.Tech (Hons), PGDM



**SANJIT KUMAR GHOSH**  
BSc, MSc, MBA



**SUDIPTO DAS**  
BCA, MBA  
'O' Level (DOEACC)  
ADSE(H) - Aptech



**KIRAN KUMAR. K V**  
M.Com, PGDBA, (Ph.D.)  
(Finance & Marketing)



**Dr. MANJUNATH B R**  
MBA, M.Com,  
CFA, EAPAF, Ph.D.  
UGC NET





**HEMANT SORENG**  
MBA (IIM Bangalore)



**MANOHAR D. RAO**  
B.Tech (IIT Madras),  
PGDM IIM (Ahmedabad)



**RISHIRAJ DASGUPTA**  
B.E, PGDM,  
IIM (Calcutta)

## MANAGERIAL SKILLS & ENTREPRENEURSHIP



**KRISHNAN R**  
PGPM, LIII (GEN)



**MINI K L PILLAI**  
M.A., M.Phil



**Dr. RONY G KURIEN**  
BSc, MBA (Symbiosis)  
Ph.D. (Anna University)



**SHRUTHI NANJAPPA**  
B.A., M.A., M.Phil  
(JNU, New Delhi)



**PREEJA SREEDHAR**  
PGDMCJ, PGHRM



**SURAJIT BANERJEE**  
PGDM- Marketing (IMT)  
Certified DISC Practitioner

## INFORMATION TECHNOLOGY



**BHARATHI RAVISHANKAR**  
BSc (Phy), MIT (MAHE),  
B.Ed. (FPM)



**Dr. ANAND KUMAR**  
B. Tech, PGDBS  
(Manipal University)



**KAVITHA K N**  
B. Tech, M.Tech  
(Ph.D.- PES University)



**S. CHITHRA**  
BSc (Mathematics)  
MCA, M.Phil, NET



**SANJIT KUMAR GHOSH**  
BSc, MSc, MBA



**SWAPNA SESHAM**  
B.Tech (EEE)  
PGP



**LAVANYA S**  
B.E, MBA

## OPERATIONS & QUALITY MANAGEMENT



**Dr. PURNAJIT CHATTERJEE**  
BSc (Hons)  
MSc Operation research  
PGDM (MBA)



**A.N.CHANDRAMOULI**  
B.E (NIT),  
PGPM (IIM Calcutta)



**RISHIRAJ DASGUPTA**  
B.E, PGDM,  
IIM (Calcutta)



**VISWANATHAN HARIHARAN**  
M.Tech  
(IIT Bombay)

## LANGUAGE



**C P RAMESH**  
B.A., M.A., B.Ed  
(Kannada)



**Dr. NEELIMA DUBEY**  
B.A. , M.A., Ph.D.  
(Hindi)



**Dr. SUSHYNI KOTHURI**  
B.A., M.A., Ph.D.  
(English)



**SHRUTHI NANJAPPA**  
B.A., M.A., M.Phil  
(JNU, New Delhi)  
(English)



**MURALIKRISHNAN**  
BSc.  
(Tamil)

## COUNSELLOR



**PRABHA THAKUR**  
Psychology Therapist  
IGDCS, ADHD, CBT, NLP



**PRATHAP**  
BSc., BPED

# INTERNATIONAL BY CREDENTIALS AND CULTURE

## A group with global operations

ISME's parent organization, NVT Quality Certification (NVT QC) is an ISO accreditation body that has certified companies for over 30 years across 36 countries. NVT QC helps in bringing a culture of best practices and the philosophy of quality into ISME. NVT Group also operates National Public School (NPS), India's leading CBSE school in Whitefield, East Bangalore, Silk Board and Marathahalli with over 3500 students.

## International background of leadership

ISME has been founded by alumni from leading US institutions like Carnegie Mellon University, Purdue and Wharton Business School, USA.

## International academic partnerships

ISME has various International tie - ups with top universities around the world in countries like Singapore, Australia, USA, Canada, Germany, Malaysia and France for study trips, faculty exchange, student exchange, pathway for Under Graduate students and joint research.

## Faculty with international exposure

All faculty at ISME bring with them an international exposure, which they have gained either by having studied abroad in leading universities or have worked in MNCs.

## Global inputs

Our students are a part of courses designed and offered at some of the top business schools leading to additional certifications like Business Strategy Game from Professor Arthur Thompson, University of Alabama, USA and International Business from Management Development Institute of Singapore (MDIS), Singapore.

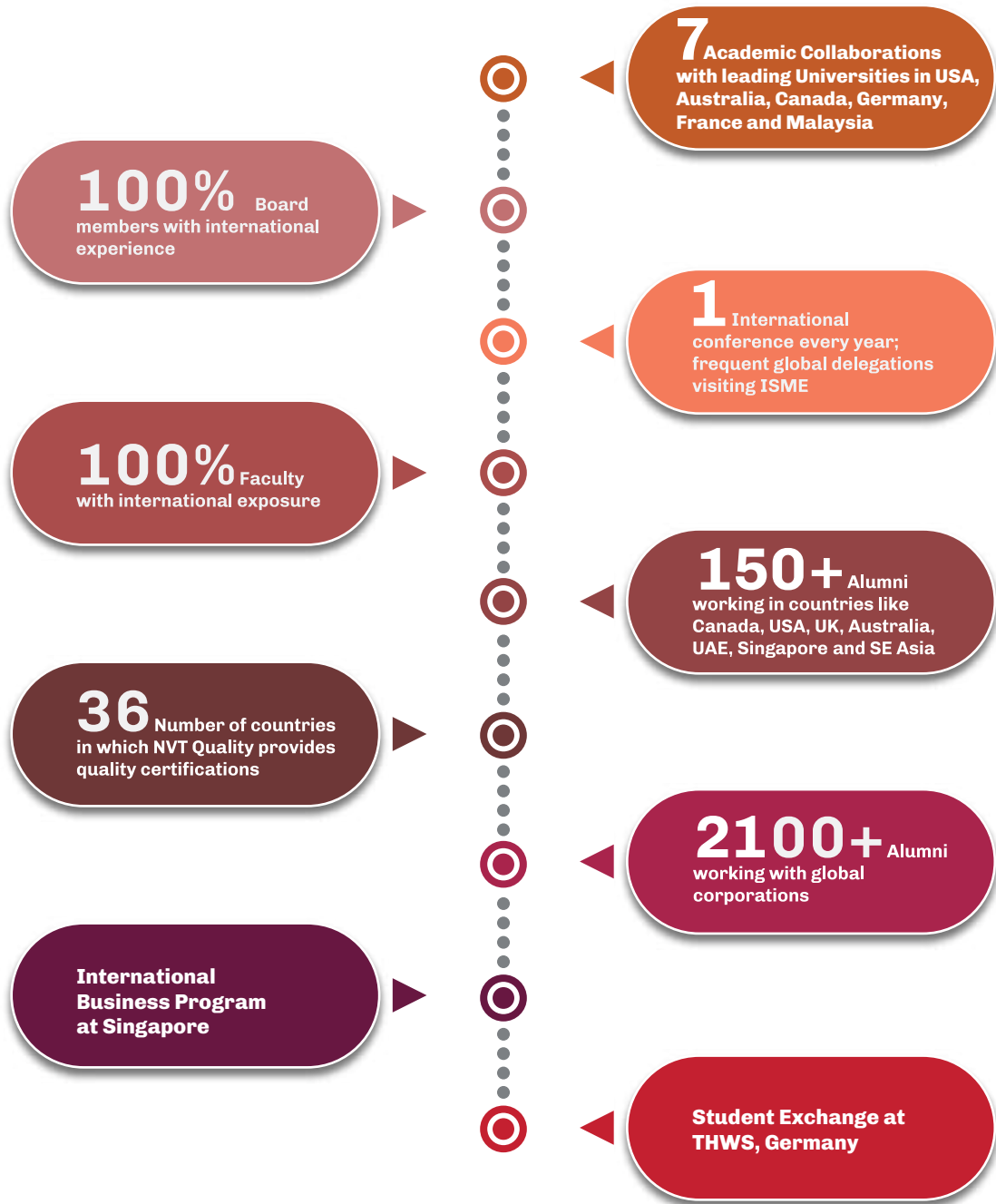
## India Business Study Program

ISME conducts India Business Study Program, which helps international students get the exposure to business and culture opportunities in India.

















# WHAT MAKES ISME INTERNATIONAL



## Academic Collaborations

 <p>University of New Castle Australia</p>	 <p>Carleton University Canada's Capital University</p>	 <p>A unit of the Arizona State University Knowledge Enterprise Thunderbird School of Global Management, Arizona</p>	 <p>UNCP, USA</p>	 <p>THWS, Germany</p>	 <p>ESC Clermont, France</p>
 <p>Universiti Putra Malaysia</p>	 <p>National Entrepreneurship Network</p>	 <p>Singapore Institute of Management</p>	 <p>Management Development Institute of Singapore</p>	 <p>Association of Indian Management Schools</p>	 <p>All India Management Association</p>

## ISME INTERNATIONAL PATHWAY

Over the years, ISME has enhanced its relationship with the leading universities in Europe, USA and Asia Pacific. Our faculty have taught in leading International Universities and are involved in several joint collaborations.

Our Under Graduate students have number of opportunities for pathway programs in higher studies after Graduation with ISME partnering Universities. ISME students will benefit from pre-approved admissions, significant fee waiver, scholarships and credit transfers.

The current opportunities for ISME students are in -

### France



### Germany



### USA



### Malaysia



## ISME STUDENTS STUDYING ABROAD

Students aspiring to study abroad requires a range of skills such as communication, problem-solving, time management etc., to ensure they can adapt to new environments and make the most of the experience. The outcome of this experience presents them with a variety of opportunities both academically and personally.

At ISME, we offer the right resources and guidance which help students successfully navigate the process. This is done via 'Study Abroad Programs', 'Academic Advising', 'Career Counseling' etc.



**VAKKALANKA SATYA SAHITHI**  
MS (Business Analytics)  
University of  
Massachusetts-USA



**NANDINI RAMANAND**  
Masters in Financial  
Management  
Frankfurt School of Finance  
& Mgmt-Germany



**KARNATI GOPI KRISHNA**  
Marketing Management  
University of Greenwich  
United Kingdom



**ABHIMANYU GOEL**  
MSc (International Management)  
Trinity College, Dublin, Ireland



and many more..



# EXPERIENTIAL LEARNING PROGRAM SINGAPORE

Students of ISME visit Singapore as part of the International Business Program. This is a part of their experiential learning. During this 10-day immersion program, the students reside in the hostels of Singapore Institute of Management (SIM) or Management Development Institute of Singapore (MDIS). It provides them a certification in 'International Business' from MDIS. It also gives them an opportunity to interact with the local students.

There are three dimensions to the International Business Program at Singapore-Academia, Industry and Cultural. In Academia, faculty from these institutes conduct workshops for the students on various topics of business and management. During the Industry interface, students get an opportunity to visit the various leading industries of Singapore, where they are able to understand the functioning of the industry and get a chance to interact with the heads of these organizations.

The cultural aspect gives students an understanding of the everyday life of a Singaporean. Singapore is a melting pot of cultures and the students are able to understand how the country has integrated the different cultures to their advantage in order to develop and progress as a nation.

Students who successfully complete all requirements of the academic sessions are awarded a certificate by the respective Institute. Hence, this International Business Program is a blend of academic rigor and self-exploration by the students which gives them a holistic understanding of the nuances required for International Business.



Singapore  
Trip Video





## Workshops and Guest Lectures in Singapore

As a part of the study program in Singapore, MDIS (Management Development Institute of Singapore) conducts various workshops and guest lectures for ISME students, focusing on professional development, skill enhancement, and personal growth.

These workshops cover topics such as "Great Team, Great Work", "Introduction to International Trade", "Out-of-the-Box Thinking and Problem Solving", "Introduction to Cross-Border E-commerce" and more. These sessions are led by experts in their respective fields.

After the workshop, students are given an opportunity to make presentations, allowing them to demonstrate their understanding of the concepts covered.



## Industry visits in Singapore

Another interesting aspect of the study program in Singapore are the Industry visits.

Industry visits in Singapore offer a unique opportunity to observe the inner workings of companies and sectors that are leading innovation in the region. These visits are particularly beneficial for students looking to understand Singapore's vibrant business environment.

Few of the Industry visits that our students undertake are Tiger Brewery, Volvo, Urban Re-development Authority (URA) Center, NEWater Plant, Nanyang Technological University.



## STUDENT EXCHANGE PROGRAM - THWS, GERMANY

### Study in one of Germany's most captivating regions, right in the heart of Europe

THWS (Technical University of Applied Sciences Würzburg-Schweinfurt) is situated in the scenic Mainfranken region of Bavaria, in southern Germany. Known for its rich academic history and global outlook, THWS welcomes students from over 70 countries who study alongside German peers, creating a vibrant multicultural environment.

For more than 25 years, THWS has cultivated strong partnerships with higher education institutions across 40 countries, enabling extensive collaboration and exchange opportunities. These partnerships facilitate a global exchange of knowledge, fostering innovation and diverse perspectives, and offering students like those from ISME a truly international academic experience.

The THWS International Campus Connect (THWS i-Campus) offers ISME students an excellent opportunity to participate in a student exchange program. Through this program, students can immerse themselves in a global educational experience, enhancing their knowledge and skills.

Participating students can take courses, collaborate with international peers, and experience the educational environment at THWS, which complements the global outlook of ISME.

The THWS student exchange program is open to both Post Graduate (PG) and Under Graduate (UG) students. Notably, high-achieving students from both UG and PG programs are offered special opportunities to further their education.

### PROGRAM BENEFIT

► **UG Toppers:** Upon completing six semesters, top-performing students in the undergraduate program are eligible to participate in a six-month certification course at THWS.

► **PGDM Toppers:** Top students from the PGDM batch are provided with the chance to pursue a three-month certification course.

A significant benefit of this program is that the tuition fees for these certification courses is completely waived, making it an attractive opportunity for academic achievers to enhance their credentials and gain international exposure without the financial burden.



Signing of MOU with THWS, Germany by the Director, ISME - Dr. Nitin Garg and Co-Chairman of the Executive Board, THWS - Dr. Rainer Wehner



## WHERE **EXCELLENCE** IS A WAY OF LIFE

ISME is a part of NVT Group which is a certifier of quality for companies and institutes for ISO 9000, thus excellence runs in our DNA.

### Rankings

ISME is a recipient of many awards for Excellence in Education and Best ROI since 2006.

### Innovative teaching methodology

Teaching at ISME through experiential learning, case studies and practical projects, provide a new facet to understanding businesses. ISME has been awarded for "Best Innovative Practice" by NHRD.

### Blended learning

ISME encourages tools like e-Books, e-Journals, weekend online classes for Dissertation, MOOCS and NPTEL courses and ISME faculty videos on the ISME YouTube Channels, which lead to learning outside the classroom.

### Placement-centric coursework

ISME has pioneered the concept of Value-Added Term (VAT) that enables students to integrate their learning for opportunities in the corporate world.

### Research focus

ISME faculty work with National and International universities on various emerging areas of management and participate in international conferences, the outcome of which is incorporated into the curriculum.

### Insights from industry

ISME hosts 100+ guest speakers and practitioners from the industry every year. There is a strong focus on creating awareness amongst students about current business events through courses and by being a part of panel discussions.







## RANKED AS A TOP B-SCHOOL

- 🏆 Ranked among Top 33 B-Schools in India by TOI and India Today
- 🏆 2nd leading B-School in India by GHRDC, 2024
- 🏆 Ranked among Top 4 Eminent B-Schools of Super Excellence by CSR, 2024
- 🏆 9th Top B-School in South by TOI, 2024
- 🏆 Ranked among Top 5 B-Schools in Bangalore by India Today, 2023
- 🏆 B-School for Best ROI by Academic Insights, 2023
- 🏆 Best school for Academic Excellence by Bangalore Management Association
- 🏆 Top 10% NIRF Score in Private B-Schools





# INTEGRATED WORLD-CLASS SMART CAMPUS TO ENHANCE THE LEARNING EXPERIENCE

ISME has a state-of-the-art campus and a feel-at-home Hostel facility.

## Classrooms

ISME has high ceiling, airy and well designed classrooms equipped with Smartboard, latest audio and video equipment.

## Knowledge Center

The college has an extensive collection of books, magazines, and journals on Management.

The library subscribes to many national and international journals and periodicals for students to enhance their learning.

ISME library also has access to IIM Bangalore library, British Council of India online library and access to databases like EBSCO, Proquest and JSTOR.

## State of the Art Auditorium

The college hosts major educational conferences, cultural programs at its state of the art 400 seater auditorium having latest acoustics, audio & video equipments.



## Computer Lab

In the computer lab, systems are equipped with the latest software to support the academic activities of the students. The entire campus is Wi-Fi enabled.

The advanced computing facilities makes ISME an ideal venue for all major entrance exams. ISME's Computer lab has conducted National level entrance exams such as CAT, XAT, MAT, CLAT, SNAP, UGAT & IPMAT



*"The Infrastructure is world class; there is greenery and positivity in the campus.*

*The classrooms are spacious and we have state of the art auditorium. The open air amphitheatre helps us to relax after college hours"*

**Pranay Barotia**  
**PGDM 2022-24**



Pranay's  
Testimonial





# LEARNING TO EXCEL IN OTHER ARENAS OF LIFE

There's life beyond academics, and ISME is just the kind of place to hone skills and participate in events outside of academic programs in various co-curricular and extra-curricular activities.

## Student Development Cell

Student Development Cell at ISME places a strong emphasis on developing well-rounded people who are not just academically capable but also emotionally strong, socially conscious and equipped to face the rigours of the working world. The Cell acts as a system of support for students that goes beyond the classroom, concentrating on their academic, professional, and personal growth.

SDC enables students develop leadership skills through Clubs, Labs, Extra-Curricular and Cultural activities. These activities improve the student's capacity for creativity, leadership, interpersonal communication and promote the value of leading a balanced life.

The Cell also has a formal mentorship program to enable students to discover their hidden potential and get personalised guidance beyond the classroom.



## Literary & Communication Club

Speech Weavers – The Communication Club has been formed to improve the speaking abilities among our students making them orators for life. The objectives of Communication Club are to understand Public Speaking skills, analyse the inhibiting factors and apply the 7C's of Communication.

## E - Cell

The Entrepreneurship cell of ISME is committed to foster the entrepreneurial spirit among the students. It gives a platform in terms of mentoring, training and knowledge dissemination to convert path breaking business ideas into self-sustaining business ventures.

We strive continuously towards nurturing individuals with creative minds and ideas with potential for substantial business opportunities. We thereby want to inculcate the spirit of entrepreneurship among young minds and become a pathway towards India's socio-economic development.



*ISME offers curricular and co-curricular activities that seamlessly blend theory with the real world.*

*All the clubs are run by students to encourage student autonomy. The activities of various clubs help shape the minds of the students, develop communication and problem solving skills. It helps us connect with our peer group where ideation takes place.*

**Rakshitha Shetty**  
BBA 2024-27



Rakshitha's  
Testimonial





## Cultural Club

The Cultural club aspires to enhance personal skills and experience personal skills such as team work, collaboration, time management and organizational skills, open-mindedness, ability to cope with criticism and learn from them. This Club along with other clubs also organizes ISME's Intercollegiate cultural extravaganza known as Buzi Buzz and programs such as TedX every year inviting eminent speakers from various facets.



## Academic Labs

The Academic Labs for different specialisations organize guest lectures, visits to industries, business workshops, case study competitions and personality development workshops.





## CSR Club

The CSR club aims to sensitize the students about their duties towards the community they live in. The club works towards ensuring an impactful transformation in the targeted area of social support and in developing a sense of empathy and responsibility towards the underprivileged.

## NSS Club

The main objective of the NSS club is to "Give back to the Society". It helps in developing the personality and character of the students through community service. NSS club at ISME encourages students to take part in all kinds of activities which involve helping people, standing up for a good cause, conducting awareness programs regarding health, hygiene, basic human rights etc. They also help the community in coming up with effective and efficient solutions.

## ISME.FIT

The main aim of ISME.FIT is to make its students fit, flexible and strong. ISME is concerned about the health and fitness of its students, and believes in making a better and healthy society for tomorrow. ISME.FIT serves as a platform for the students to develop themselves physically and mentally. The focus of the program is to develop flexibility, strength and endurance among its students.

ISME has a new sports center with world class Astro Turf Football field, Basketball and Volleyball for all it's students.



# GEARING UP FOR THE CORPORATE ENVIRONMENT

The focus at ISME is to prepare students for the corporate world. With industry application at the core of our teaching, there are many activities which are designed to prepare future business leaders.

## Value Added Term (VAT)

ISME offers a unique mini semester focused on preparing students for the corporate world. These trainings are beyond the regular academic program which helps in transforming students for a smoother transition into the corporate world.

The unique 4-week training program is aimed at preparing students for the Placement Season. The courses are:

- 1 Skill Enhancement Workshops
- 2 Group Discussion (GD) and Mock Interview Training
- 3 Technical Certification Programs
- 4 General FAQs and Subject specific FAQs

## Open corporate culture

ISME encourages and practices an open international corporate culture. This entails an open-door transparent policy with senior faculty members being accessible to the students.

## Corporate-like discipline

To get students accustomed for corporate life, the college follows a calendar that mirrors a corporate calendar in terms of rigour, holidays and on-time deliverables.



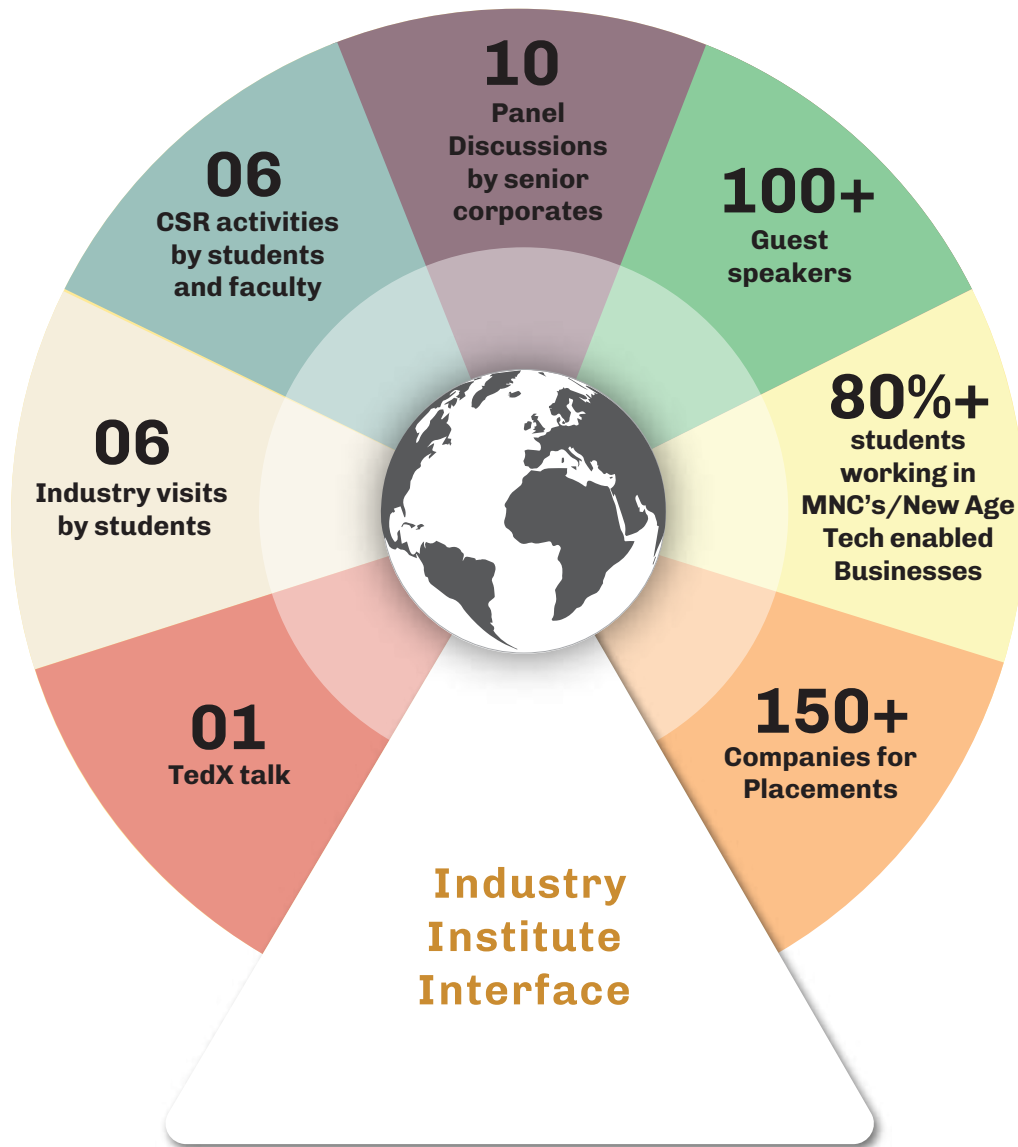
*"ISME has provided me with an opportunity for Internship as well as placement.*

*What sets ISME apart is their unique teaching approach. The faculty encourages its students to think critically and learn the concepts in advanced manner. The exposure to various events such as Conclaves, TEDx etc., helps us to keep abreast with the Industry trends. ISME has helped us grow personally and professionally"*

**Jinisha Soni**  
**PGDM 2022-24**  
**Broadridge**



Jinisha Soni's  
 Testimonial



## Internship Guidance

During their internship with an organization, every student has a faculty mentor who is connected with the manager of the company. This faculty member helps the student gain maximum out of the internship by being an interface between the company's manager and the student.

## Managerial Skill Development

An important part of business success is soft skills. At ISME, students are groomed in time management, leadership, creativity, negotiation skills, business etiquette, etc. as a part of the Managerial Skills Development program.

## Industry-focused curriculum

ISME's course content is regularly updated in consultation with corporates to keep students in tune with evolving practices at workplace across disciplines.

## Industry interface and visits

Panel discussions and talks from the corporate leaders are organized regularly. To give students an insight into corporate culture and how organizations and industries function, industry visits are organized regularly.



# OPENING THE DOOR TO FUTURE OPPORTUNITIES

ISME graduates set foot in various domains as soon they pass out of their program, finding their niche in various sectors. Every year there are over 150+ companies visiting ISME to recruit students at various organizational levels. Here's a glimpse of the various sectors and brands where ISME alumni are placed for various job profiles in Marketing, Finance, HR, Analytics & Technology.

## Financial Services



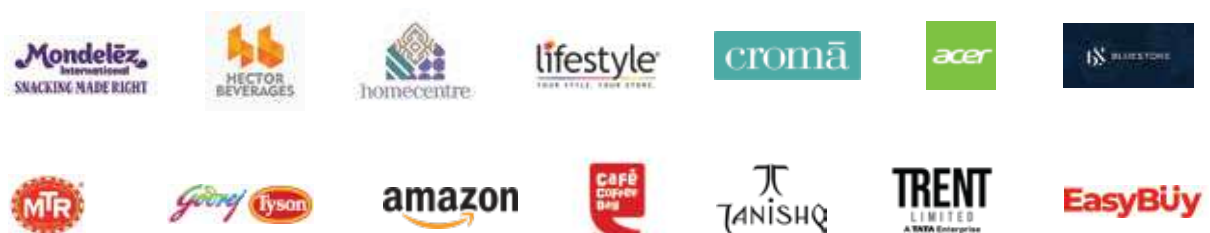
## Consulting



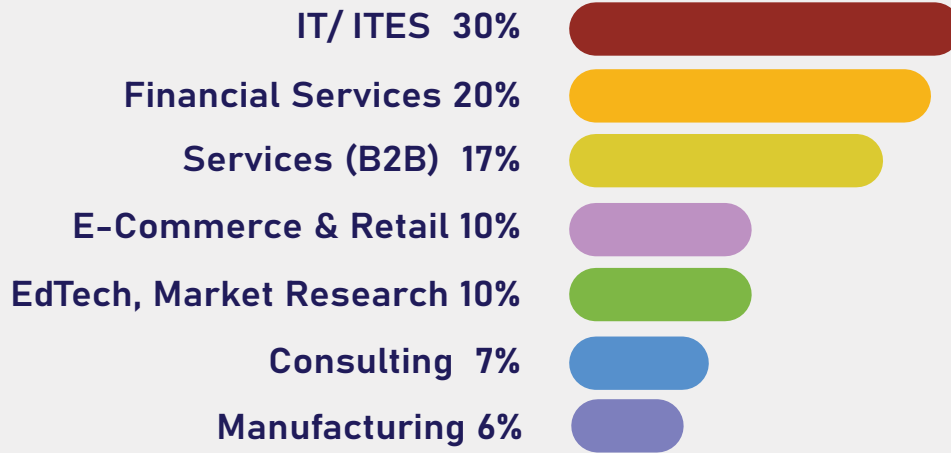
## EdTech



## FMCG, E-Commerce & Retail



# SECTOR-WISE DISTRIBUTION OF STUDENT PLACEMENTS



## IT/ITES

## Infrastructure

## Manufacturing

## Market Research & Services



## PROFESSIONAL & INDUSTRY BODIES COLLABORATIONS



## EXPERIENTIAL LEARNING ALL THE WAY

### Summer Internship

ISME's Career Opportunity Center helps place first year PG and third year UG students as summer interns for 8 to 10 weeks with various Corporates and Industries. This helps students get their Industry experience and enables them to decide on their specialisation.

### Mentoring and counselling

The Career Opportunity Center organizes workshops on resume writing, cover letters, interview skills, job search skills, networking and counselling sessions to help prepare students to develop effective interpersonal and presentation skills.

### Recruiting activities

The Center organizes on-campus and off-campus recruitment events where companies are invited to participate, share and discuss career opportunities in their organization. Every year there are over 150 companies visiting ISME to recruit students at various organisational levels. ISME has achieved a 100% placement record since its inception.

# LEARNING ON THE JOB IS LEARNING FOR THE JOB

## ISME Industry Trajectory Program (ITP)

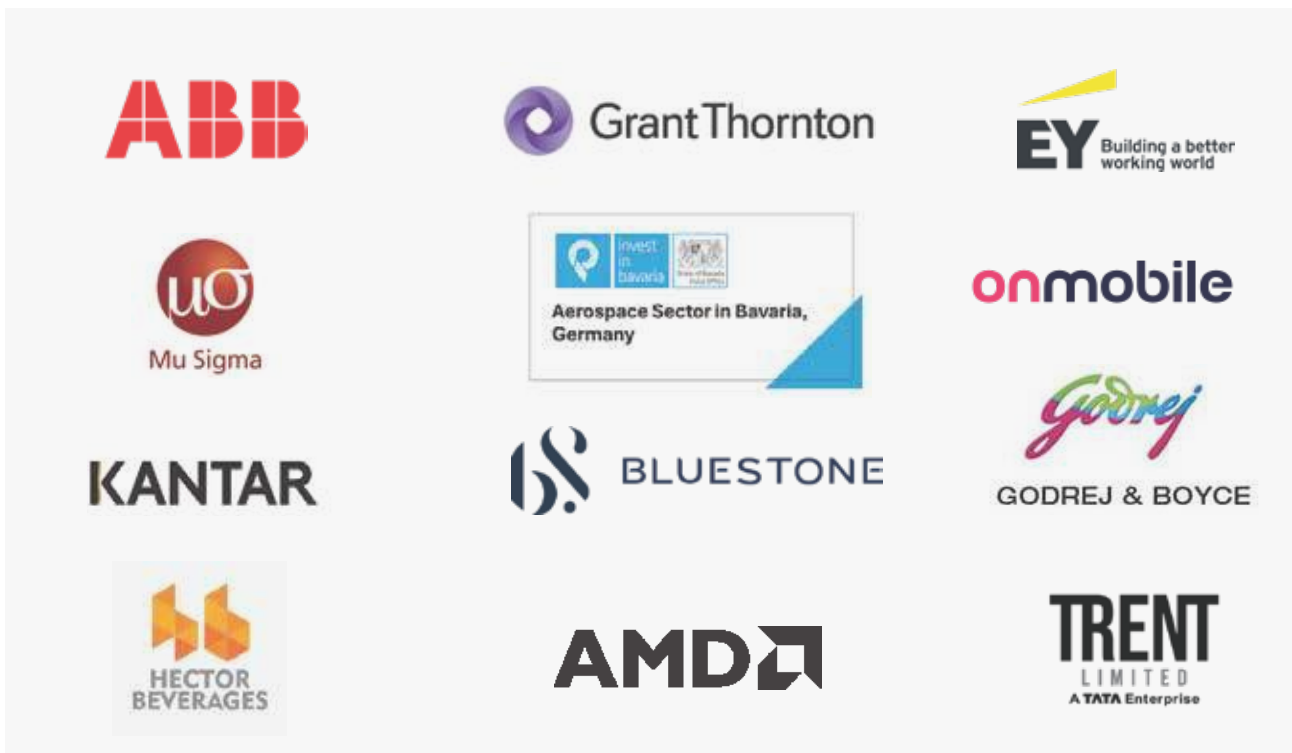
Get employed by second year of ISME in companies and other top MNC's

ISME has collaborative arrangements with top MNCs for Industry Trajectory Program. The program enables students to undergo a four months' internship followed by a job offer by December, six months before graduation.

The Objective of the Industry Trajectory Program (ITP) is to prepare the selected students in their second year of the PGDM program for specific company and job requirements through customized coursework teaching them specific topics needed for the role. This enables students to become culturally aligned and productive by the time they are on board full time.

This is an effective mutually and a beneficial strong model for corporate and academic collaboration. Students earn upto Rs. 35,000/- per month during the program.

Below are few of the companies participating in the ITP



*"The last one and a half year has been the BEST phase of my life. ISME has provided an opportunity to learn new skills and imbibe them."*

*"I would like to thank ISME Management, faculty, and the COC department for giving me the ITP opportunity and step into the Corporate World"*

**Mayank Bhangui Narsinva**  
**PGDM 2023-25**  
**Deloitte**



Mayank's  
Testimonial



## CORPORATE LEADERS@ISME



**Krish Shankar**  
Ex Group Head - Human Resources (Infosys)  
Visited ISME, spoke at HR Colloquium  
Autographed his book 'Catalyse' : Power up your people

ISME has over 50 industry leaders visiting annually, to enrich students with insights and share their experiences and best practices.



**CORPORATE LEADERS@ISME**

ISME has over 100 industry leaders visiting annually, to enrich students with insights and share their experiences and best practices.



**Prof. Vasanthi Srinivasan**  
IIMB Professor

Topic: "Rapid Growth Organisation-OB & HRM"



**Preeja Sreedhar**  
Leadership Coach  
Mu Sigma

Topic: "Workshop on Self-development-Parichay"



**Deepika Sandeep**  
Honeywell  
Director AI/ML,

Topic: "Demistify AI (Impact of AI on Business Organizations)"



**Dr. Jayaprakash Sugavanam**  
Co-Founder & Data scientist  
Nanobi Analytics

Topic: "ETL- an Industry Perspective + Internship Opportunities"



**Dr. Srinath Beldona**  
Dean and Professor of Management at the Meinders School of Business, Oklahoma City University Meinders School of Business

Topic: "Future of Analytics"



**Rajesh Rajendran**  
Principal Data Scientist  
Infosys

Topic: "FML"



**Reedhima G**  
Associate of Commercial Banking  
JP Morgan Chase & Co

Topic: "Importance of Data Science and Engineering"



**Sanjay Agarwal**  
Program Director  
IBM

Topic: "Quantitative Techniques"



**Prof. Gad Ravid**  
Founder, VP- Academic Affairs, UIBE Israel

Topic: "Management of Innovation Challenges in the New World of Work"



**Greeshma Shukla**  
Deputy General Manager  
Reliance JioMart

Topic: "Transition of Consumer Behaviour across various mediums"



**Malavika R Haritha**  
Founder Saachi & Saachi Focus/BrandCircle  
Brand Circle

Topic: "Quantum Change in Marketing"



**Mr Akansh Rastogi**  
Analytics Manager  
AXIS Bank | EX-EXL | EX-MuSigma

Topic: "Importance of Statistics and Visual Analytics in decision making"



**Samir Jayaswal**  
Director, Co-Founder & CEO  
Finbigo.com

Topic: "Career Opportunities in Fintech & The Future of Fintech"



**Shikha Nag**  
Founder & Director  
Indian Academy of Public Speaking

Topic: "Showcasing the Best of YOU" Self-Development Workshop



**Dr. Sankarshan Basu**  
Professor of Finance & Accounting  
IIM Bangalore

Topic: "Indian Business & Economic Landscape Today and Tomorrow"



**Clemens Arzt**  
Professor Constitutional & Administrative law at the Berlin School of Economics and Law (HWR) Berlin School of Economics and Law

Topic: "Seminar on Higher Studies in Germany"



**Aswani Chaitanya N**  
CEO  
Deutsche Bank, Goldman Sachs

Topic: "Brand Building, Marketing and D2C"



**Dr. Seema Gupta**  
Former Professor of Marketing  
IIM Bangalore

Topic: "Indian Business & Economic Landscape Today and Tomorrow"



**Akansh Rastogi**  
Senior Manager Analytics  
AXIS Bank | EX-EXL | EX-MuSigma

Topic: "Importance of Statistics and Visual Analytics in decision making"



**Sameep Singh**  
Senior Chapter Manager (AVP)  
Societe Generale

Topic: "Corporate Valuation"



**Sudeesh Sahu**  
Tech Process Lead  
Google Operations

Topic: "Building a Data -Savvy Workforce"



**Saurabh KV**  
VP -Brand Strategy  
Ogilvy

Topic: "How to create effective creative brief and measuring Ad effectiveness"



## RECRUITERS SPEAK

# TALENT THAT'S WIDELY ACKNOWLEDGED AND VALUED.

My association with ISME has been a pleasing experience. I was quite enthralled with the quality and efforts of its corporate resource center and a highly motivated placement cell, which ensures each and every student gets an opportunity to get a good job and kick-start their career. The college puts genuine efforts into nurturing each student, preparing them both mentally and physically to take on the challenges of the corporate sector. We are incredibly happy and thankful to ISME for the continued association with Grant Thornton INDUS.



**- Ankur Garg - Associate Director - Grant Thornton**

Federal Bank has been recruiting and been a part of ISME from the past few years. With the quality of students joining us, we would like to come again for Recruitment.



**Sanjeeva Kumar Kakamari- Dy Vice President, Unit Head – Federal Bank**

"Mu Sigma has a truly fruitful partnership with ISME – we have recruited fantastic talent from ISME who continue to grow in our organization and add tremendous value to our DNA. The work ethic, cultural DNA, quality of education delivered at ISME is helping mould students into leaders, and we look forward to a sustainable partnership with ISME"



**- Hashir Sitheekh - India Leadership - Founder & CEOs office, Mu Sigma**

"Thank you ISME for partnering with us with some of the great talents that you have unearthed and groomed them for a successful career and to face the challenges that lie ahead"



**Mr. Krithivasan Venkatramani - Associate Vice President – Broadridge Financial Solutions**

"The students are just exceptionally talented and the co-ordination from the placement committee was outstanding"

Thank you for choosing us.



**Ms. Prakalya M - Lead - Talent Acquisition – My Gate**

"A key ingredient of a knowledge worker is the ability to think on their feet and the 'fire in their belly' that will keep them driven. The students of ISME have shown that these qualities are part of their working culture both as student (during internship) and as a corporate citizen at IDC."



**- Venu Reddy - General Manager - International Data Corporation**

"I've had the privilege of engaging with ISME and have been consistently impressed with their proactive placement cell, the outstanding quality of their students, and the seamless interactions throughout. Their commitment to fostering well-rounded management professionals is evident, making collaborations both easy and productive. ISME truly stands as a hallmark of excellence in management studies."



**- Madhura Donde - Lead HR Business Partner, Hector Beverages Pvt Ltd**

## ON A FUTURE THAT SPEAKS OF THEIR LEARNING AND SUCCESS

Students of ISME have created an identity of success and triumph for themselves across different levels at some of the best companies. Here's what some of our alumni have to say about their learning at ISME.



*"My academic journey in ISME was a great experience. As I step into my first phase of professional journey, I would like to express my sincere gratitude to all my Teachers and Mentors who have guided and supported me since I joined.*

*Words are not enough to express how grateful I am to the Management and the Placement team"*

**Ankit Bhattacharya**  
**BCom + ACCA 2021-24**  
**KPMG**



Ankit's  
Testimonial

### Alumni: Excelling in their careers

The name of ISME is being held high by its alumni, many of whom are charting successful careers within the country and abroad – whether it's in being a part of an organization in the position they are in, or in looking after the operations of their family-held business. The placement record of all alumni is available on the ISME webpage.



Placement  
Record



# Over 2100+ ISME Alumni working in Global Companies

## Some of ISME Alumni working abroad

2009	Jaswinder Kaur Bedi	Shuaa Capital psc	United Arab Emirates
2009	Vidhi Chauhan	HSBC Global Banking & Markets	Singapore
2009	Nitin Navaratna	InMobi, Business Lead	Singapore
2009	Newton Raja	Emirates Business Machine LLC	United Arab Emirates
2009	Divya Srivastava	Scotia Bank	Canada
2010	Gaurav Chaurasia	London Life Insurance Company	Canada
2010	Krishna Kumar Mr	Transworld Logistics	United Arab Emirates
2010	Deepak Kumar	Imetris Corporation	United States of America
2010	Aditi Thakur	Suncorp Group	New Zealand
2010	Laxmiprasad Sati	Kantar, Researcher-Consumer Practice,	United Arab Emirates
2010	Vivek Goyal	Serco	Hong Kong
2010	Vindhya Malviya	Pricewaterhouse Coopers	USA
2010	Ankit Srivastava	Wipro Promax Analytics Solutions	Australia
2011	Puja Devanand	Verizon Media Services	Canada
2011	Lal Mohammad Khan	Salam Technology	Qatar
2011	Richa Sharma	Kaufland	Australia
2011	Ronald Fernandes	Capillary Technologies	United Arab Emirates
2011	Priyanka Joel	Metier - Strategic HR Solutions	United Arab Emirates
2011	Sruthi.T	Quotient Technology	United States of America
2011	Smita Lakra	Picodi.com	Poland
2011	Isha Agrawal	Ramsay Healthcare	Australia
2011	Renjini Rajan	Daimler Trucks	United States Of America
2011	Pranav Kulkarni	Qatar Financial Centre	Qatar
2012	Husain Waris Kirmani	Sovereign Corporate Services	United Arab Emirates
2012	Garima Pal	Golder	Australia
2013	Sagar Arun Baria	Emirates NBM	United Arab Emirates
2013	Seepica Singh	PayPoint plc	United Kingdom
2013	Vaishnavi Mishra	Charter Communications	United States of America
2014	Alambir Singh	Fractal	Canada
2014	Avleen Kaur	TCS	Canada
2014	Indira Priyadarsini	Invaris Consulting	Malaysia
2016	Faizal Kallil	Orient Insurance	United Arab Emirates
2017	Balaji R	National Bank of Oman	Oman
2017	Katakam Jahnvi	AON	United States of America
2017	Pillai Akhil	Safaa Al Noor LLC Dubai	United Arab Emirates
2018	Neha Shindey	Trigent Software	United States of America
2019	Monish Mohanty	Alten Calsoft Labs	United States of America
2020	Chaitanya Krishna Mupparaju	Imertis corporation	United States of America
2021	Samiksha Kudale	Mercedes Benz	United States of America
2022	Sandeep Reddy Obula	Charter Communications	United States of America



# EXCELLENT PLACEMENTS (2024) IN TOP COMPANIES



**ABHINAV  
ANURAG SINGH**  
Karnataka  
**BHARAT FINANCIAL  
INCLUSION LTD.**



**AMISHA MATHUR**  
Rajasthan  
**RYAN INDIA TAX  
SERVICES PVT. LTD.**



**AMRUTHA  
KRISHNA P A**  
Kerala  
**OCWEN FINANCIAL  
SOLUTIONS PVT. LTD.**



**ANAMIKA RAY**  
Assam  
**OCWEN FINANCIAL  
SOLUTIONS PVT. LTD.**



**ANJALI BINJRAJKA**  
Bihar  
**GRANT THORNTON**



**ARUN KUMAR**  
Haryana  
**BLUESTONE JEWELLERY  
& LIFESTYLE PVT. LTD.**



**AYUSHI PANDEY**  
Chhattisgarh  
**DOTDASH MEREDITH**



**CHELSEY SALUJA**  
Madhya Pradesh  
**KANTAR**



**GUNASEELAN R**  
Tamil Nadu  
**TAMARA LEISURE  
EXPERIENCES PVT. LTD.**



**JARAJAPU  
UDAYA CHANDRA**  
Andhra Pradesh  
**AON**



**MAHEK KAILASH  
GALLANI**  
Maharashtra  
**MONDELEZ INDIA  
FOODS PVT. LTD.**



**MALLIKA GAUR**  
Haryana  
**LONDON STOCK  
EXCHANGE GROUP**



**MD NASHAT ALI**  
Jharkhand  
**FINASTRA**



**MEDISETTY  
DEVA HARSHA**  
Telangana  
**TCS**



**MOHIT KUMAR  
MAHATHA**  
Jharkhand  
**MICRO LABS LTD.**



**PANKAJ MITTAL**  
Punjab  
**ERNST & YOUNG**



**PRANAV NIGAM**  
Madhya Pradesh  
**FIRSTSOURCE  
SOLUTIONS LTD.**



**PRANAY BAROTIA**  
Rajasthan  
**COFFEE DAY  
BEVERAGES**



**PREETHI SINGH**  
Uttar Pradesh  
**BHARAT FINANCIAL  
ENVISION FINANCIAL  
SYSTEMS INDIA PVT. LTD.**



**PURABI DAS**  
Assam  
**GODREJ TYSON  
FOODS LTD.**



**R S S UDAY SAI**  
Telangana  
**GOLDMAN SACHS**



**S.AAKASH**  
Kerala  
**HONEYCOMB  
CREATIVE PVT. LTD.**



**SACHIN RAJ**  
Karnataka  
**TOX® PRESSOTECHNIK  
(INDIA) PVT. LTD.**



**SHIKHA RAI**  
Madhya Pradesh  
**BROADRIDGE**



**SONALI  
PRIYADARSHI**  
Jharkhand  
**TATA ELXSI**



**SUBHAM  
MOHAPATRA**  
Odisha  
**ACUITY KNOWLEDGE  
PARTNERS**



**SUBHRANIL  
BAUR**  
West Bengal  
**FLY REALTY**



**SWEKSHA SINHA**  
Uttar Pradesh  
**MYGATE**



**T SRAVANI  
HARSHITHA**  
Andhra Pradesh  
**DELOITTE**



**THAPE VRUSHABH  
PROMOD**  
Maharashtra  
**GRAEVES COTTON**

And Many More...



# WELCOME HOME

## Hostel & Sports Facilities

ISME has a modern on-campus hostel for boys and girls. It features an open-air amphitheatre, basketball and other sporting facilities with round-the-clock security. The entire hostel is Wi-Fi-enabled for uninterrupted learning environment outside the class.

Some of the facilities provided in the hostel and campus are:

Hot/Cold Water • Pollution-free atmosphere • North and South Indian veg food • 24/7 CCTV Monitoring • RO filtered drinking water • Spacious playground • Ragging-free campus • 24/7 security • Separate Recreational Room with TV • Volley Ball Court • Badminton Court • Basket Ball Court • Astro Turf Football Field







*"ISME has on campus vibrant and comfortable hostel. The food served here is a mix of both North Indian and South Indian.*

*The campus has state of the art sports complex with various sporting avenues. Amphitheatre and rooftop cafe are great places to unwind after class hours"*

**Hithesh V**  
**MCA 2024-26**



Hithesh's  
Testimonial

## Cafeteria

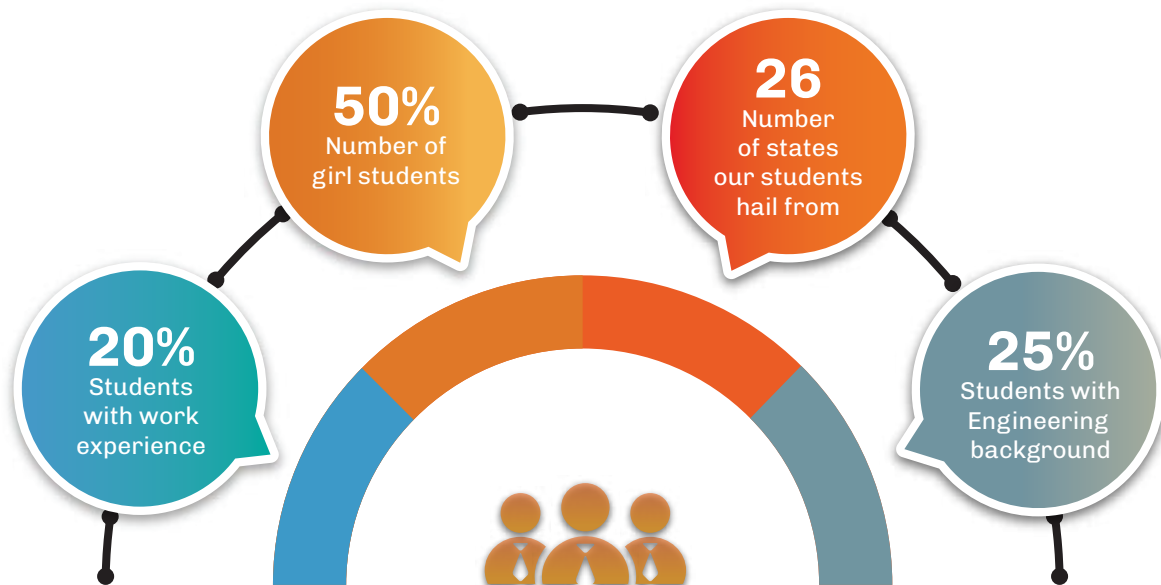
The spacious campus has a Canteen and a Rooftop Cafeteria with a magnificent view of the amphitheatre. Apart from being a favourite hang-out for social interactions, the Canteen provides homely, healthy and hygienic food.





## STUDENT DIVERSITY

ISME is a home to many Indian and International students. Students from different parts of the country come to ISME to build their future. Life @ISME is a blend of many backgrounds and cultures. With the stage set for a constant exchange of customs and traditions, the air and mood is always of bonhomie, oneness and fun.





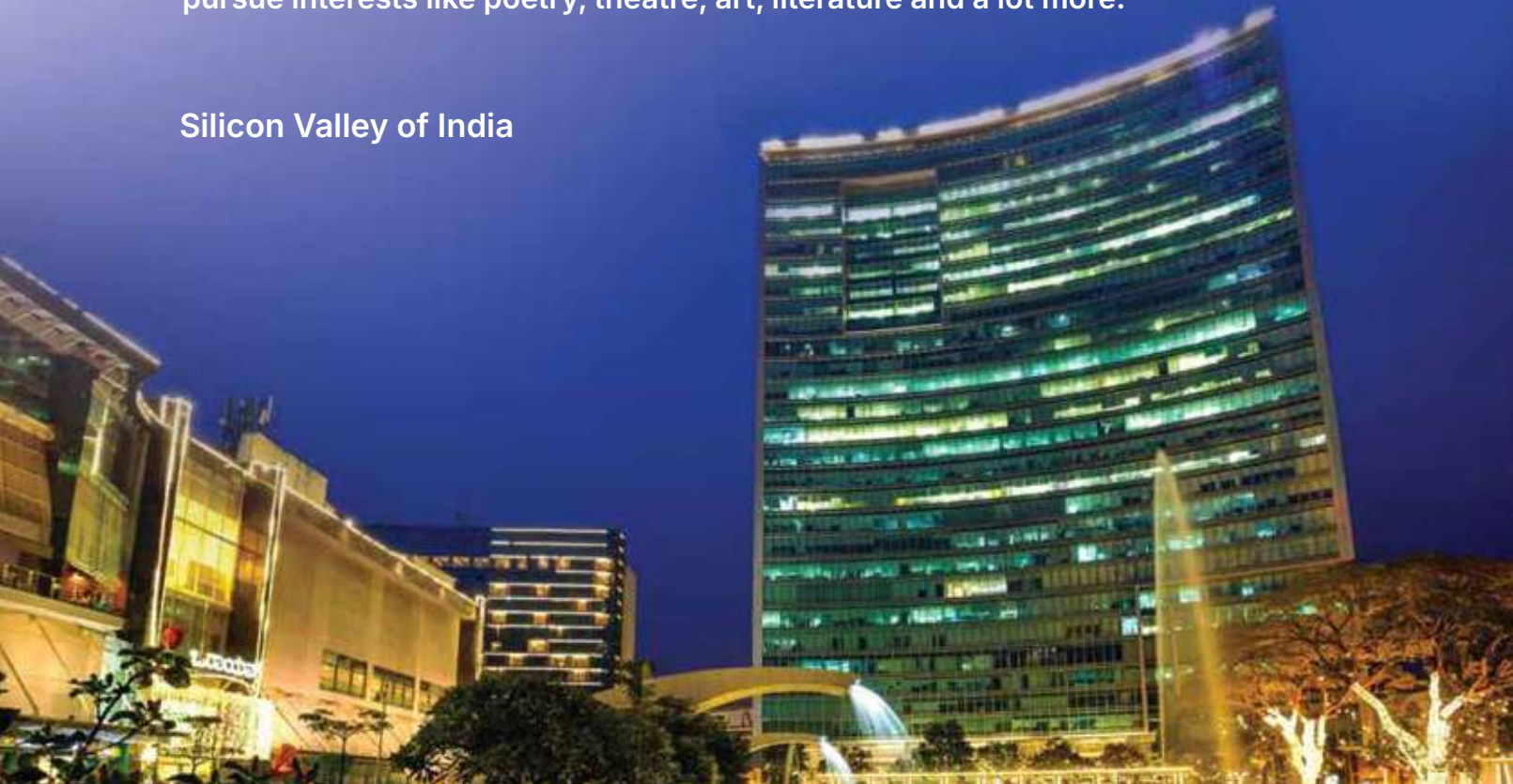
# **BANGALORE** A MELTING POT OF IDEAS, THE HUB OF OPPORTUNITIES

There are many reasons that make Bangalore a city to flock to and attracts young and aspiring professionals from across the world.

Bangalore, also known as 'the Silicon Valley of India', 'the IT Hub of India', 'the Startup Capital of India', is always welcoming to anything that's innovative. It has made a place for itself in the 'top 10 preferred entrepreneurial destinations of the world' and has the highest job potential in India.

The climate of Bangalore is pleasant throughout the year and the city is a melting pot of cultures, lifestyles, cuisines and ideas that inspire progress. Bangalore is a fun place for youngsters with amazing spread of avenues to pursue interests like poetry, theatre, art, literature and a lot more.

## Silicon Valley of India



## Start up capital of India





## WELCOMING THOSE WITH THE DESIRE TO GO PLACES

ISME takes great pride in admitting students from overseas and 26+ states of India every year. This diverse environment helps in nurturing and enriching students, who get individual attention as a result of our excellent faculty-student ratio. Well-designed curriculum and practical approach towards the courses boost the energy levels of the students. Students are transformed into smart, confident individuals ready to take on the challenges of the corporate world and succeed in life.

We look forward to meeting you and welcoming you to ISME.



Director-Admissions  
Message



**Pallavi Jain**

Director

Admissions & International Relations  
MBA-Symbiosis; HRM-Wharton, USA



**PROGRAMS  
AND ELECTIVES**

# EXPAND YOUR HORIZONS

## Campus:

International School of Management Excellence,  
Sy. No. 88, Chembanahalli, Near Dommasandra Circle,  
Sarjapur Road, Bangalore - 562 125, Karnataka, India.

**WhatsApp** : +91 87924 98559

**Phone** : +91 88806 12345

## Corporate Office:

International School of Management Excellence,  
CAP 1, EOIZ, Export Promotion Industrial Park,  
Near ITPL, Whitefield, Bangalore - 560 066,  
Karnataka, India.



EXCELLENCE IN MANAGEMENT  
EDUCATION SINCE 2006



**ISME**  
International School of  
Management Excellence  
Bangalore

**Email:** [connect@isme.in](mailto:connect@isme.in)  
[info@isme.in](mailto:info@isme.in)

**Web:** [www.isme.in](http://www.isme.in)

**Blog:** [isme.in/blogs/](http://isme.in/blogs/)

**Instagram:** [activities.isme](https://www.instagram.com/activities.isme)

**Facebook:** [facebook.com/ismeexcel](https://www.facebook.com/ismeexcel)

**LinkedIn:** <https://www.linkedin.com/school/ismebangalore>