

INTERNATIONAL SCHOOL OF MANAGEMENT EXCELLENCE

**Two-Years PGDM (Finance) +
US CPA AICTE Approved,
US CPA aligned Program**

**One-Year PGPM (Finance) +
US CPA Certified US CPA
Aligned Program**

International by Credentials and Culture
Corporate Centric-Approach
Driven by Excellence
Focus & Rigours Learning
for Dual Outcome



Becker⁺

MORGAN_{IND}
beyond professional education



About ISME

ISME is a leading business school offering world class education through a student focused culture of excellence, international outlook, entrepreneurial thinking and industry alignment. ISME is part of the NVT group, an ISO accreditation body that has certified companies for over 25 years across 36 countries. ISME was founded in 2006 by alumni from CMU, Purdue and Wharton, USA.

About Becker Professional Education

Becker Professional Education is a global leader in professional education, with a track record of growth spanning more than 60 years. Becker has helped nearly half a million Accounting and Healthcare professionals advance their careers through their product offerings, which include the CPA Exam Review, USMLE® Exam Review and Continuing Professional Education courses. Becker's global presence includes more than 2,000 partners in various prominent institutions.

ISME Advantage

International by Credentials and Culture

- UK - London School of Economics
- USA - Westcliff University
- Canada - Carleton University
- Australia - University of New Castle
- Singapore - Singapore Institute of Management & Management Development Institute of Singapore

Focus & Rigours Learning for Dual Outcome

- Professional Qualification with Leadership Skills
- 100% Alignment of Curriculum with US CPA
- Outcome-based Training for Holistic Development
- 50+ Accomplished Faculty with Practitioner Experience

Driven by Excellence

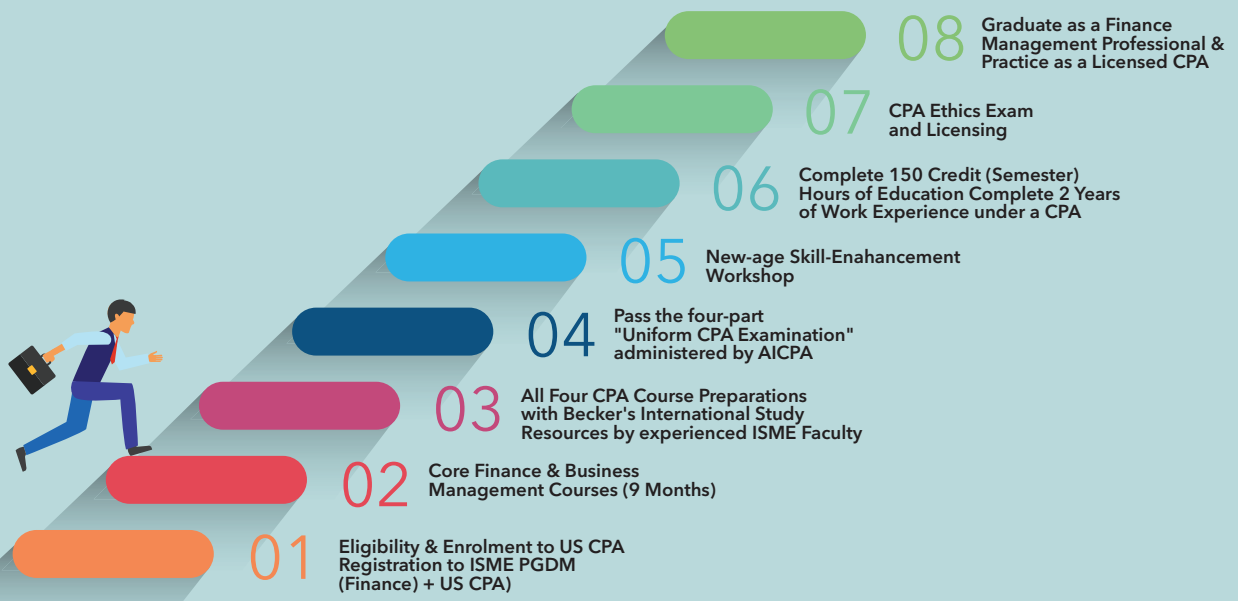
- Ranked 25th All India by Business India, 2020
- Ranked 39th All India by Times of India B-School Rankings (2019)
- Receipts of Best ROI since 2006
- Ranked 3rd Best B-School of Eminence by Competition Success Review (CSR) 2019

Corporare-centric Approach

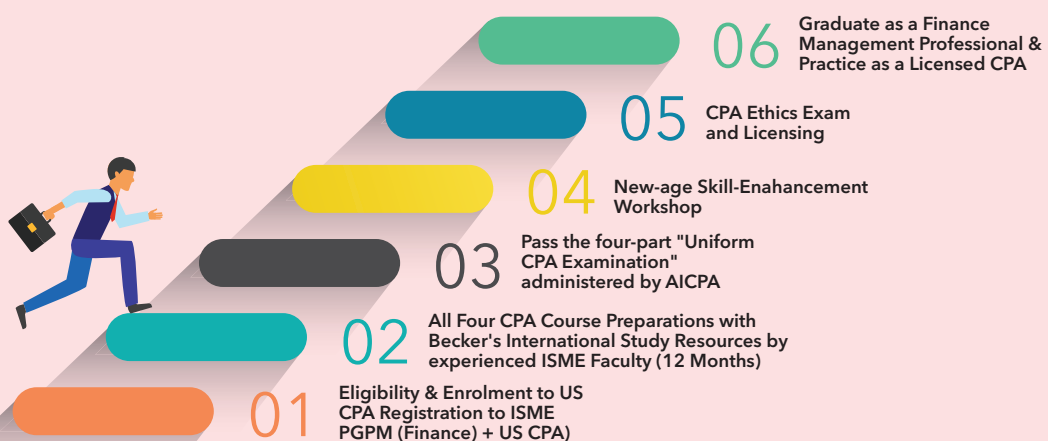
- International Conferences, Panel Discussions and Guest Lectures
- Over 100 companies like PwC, Wells Fargo, E&Y, TCS, Deloitte recruit our students
- Over 1600 alumni working in MNCs in India and abroad

What does it take to become a CPA?

Two-years PGDM (Finance) + US CPA Journey



One-year PGDM (Finance) + US CPA Journey



Program Highlights



Approach to Learning

- ISME's US CPA based post-graduate programs are offered to working professionals in the live online mode and 6-8 sessions held during weekends.
- The program is designed to build the soft and functional skills needed for managerial positions, while also preparing the student to take all the four exams of the US CPA licensing process. The program is offered across 7 terms (4 terms for one-year program) spread over 22 months (11 months for one-year program), wherein 4 terms of CPA courses are rigorously structured to prepare the student 100% for each of the four exams of US CPA, whereas the remaining terms deliver business management & finance courses.
- The program is delivered by experienced academicians & industry practitioners and the course materials are provided by Becker's international CPA review materials.



Testimonials from Benefitted Students



Rita Haidar – Beirut, Lebanon

Becker's comprehensive study material & instructions have enabled me to pass all four CPA exams from the first attempt, while keeping my full-time job!

Khaldoon Ghaith – Amman, Jordan

I highly recommend Becker's learning system as they were the key to my success. The support team was advising me on the right path throughout my experience!

Tong Guo, San Fransico, CA

Using Becker CPA Review, I passed all 4 sections on the first try within 12 months: FAR-92, AUD-87, REG-82, BEC-94

Jason Delos Reyes Boyer and Ritter, CPAs and Consultants

With less than 6 months before my start date, I knew it would be a daunting task, but with Becker it became all the more manageable. I credit most of my success to Becker's outstanding study materials and quality live instruction. Thank you Becker for helping turn my ambitious goal into a startling reality!

Program Structure

Two-years PGDM (Finance) + US CPA

Term-1 | 10 Weeks

- Economics for Decision Making
- Quantitative Methods for Management
- Managing People & Organisations
- Business Analytics & Advanced Excel
- Skill Enhancement Workshop- I

Term-2 | 10 Weeks

- Marketing Management
- Applied Financial Management
- Project Management
- FinTech & RegTech
- Skill Enhancement Workshop- II

Term-3 | 15 Weeks

- Financial Accounting and Reporting (FAR)
(100% Focused Preparation for the 4-Hour US CPA Examination of Multiple-choice questions & Task-based Simulations)

Term-4 | 15 Weeks

- Regulation (REG)
- (100% Focused Preparation for the 4-Hour US CPA Examination of Multiple-choice questions & Task-based Simulations)

Term-5 | 12 Weeks

- Business Environment and Concepts (BEC)
(100% Focused Preparation for the 4-Hour US CPA Examination of Multiple-choice questions, Written Communication, Tasks & Task-based Simulations)

Term-6 | 12 Weeks

- Auditing and Attestation (AUD)
(100% Focused Preparation for the 4-Hour US CPA Examination of Multiple-choice questions & Task-based Simulations)

Term-7 | 10 Weeks

- Accounting & Financial Analytics
- Security Analysis & Portfolio Management
- Derivatives & Alternative Investments
- Multinational Financial Management (Thunderbird)
- Skill Enhancement Workshop- III

One-years PGPM (Finance) + US CPA

Term-1 | 15 Weeks

- Financial Accounting and Reporting (FAR)
(100% Focused Preparation for the 4-Hour US CPA Examination of Multiple-choice questions & Task-based Simulations)
- Foundations of Finance

Term-2 | 15 Weeks

- Regulation (REG)
(100% Focused Preparation for the 4-Hour US CPA Examination of Multiple-choice questions & Task-based Simulations)
- Skill Enhancement Workshop- I

Term-3 | 12 Weeks

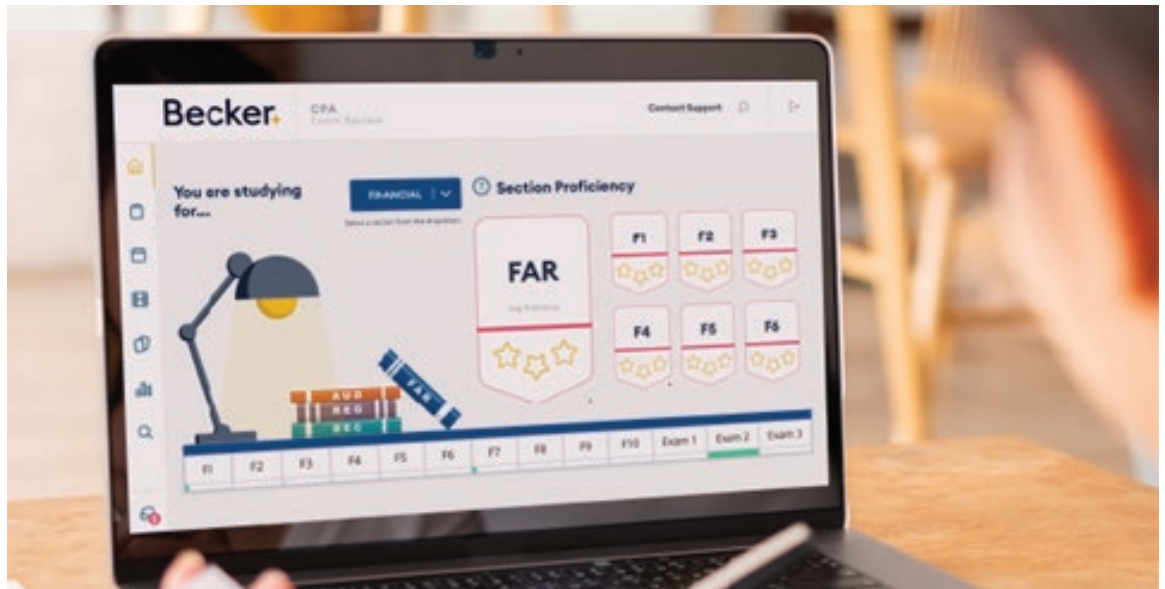
- Business Environment and Concepts (BEC)
(100% Focused Preparation for the 4-Hour US CPA Examination of Multiple-choice questions, Written Communication, Tasks & Task-based Simulations)
- Skill Enhancement Workshop- II

Term-4 | 12 Weeks

- Auditing and Attestation (AUD), (100% Focused Preparation for the 4-Hour US CPA Examination of Multiple-choice questions & Task-based Simulations)
- Skill Enhancement Workshop- III

International MoU between ISME & Becker's

ISME has entered into an International MoU with Becker's International to offer the Post-graduate programs that enable the student to 100% prepare for the four-CPA exams. Currently, ISME is offering the programs for candidates from India, Indonesia, Bangladesh, Myanmar, Nepal, Malaysia, Sri Lanka, Bhutan and Maldives.



The ISME-Becker Difference

- » 94% CPA Exam Sections Passed
- » Exam-matching Materials
- » Relevant and up-to-date
- » Complete 4-part CPA Exam Review Course, AICPA Blueprint Matching (Updated for 2021)
- » AI based Adaptive Technology to focus preparation in challenging areas
- » Proficiency Badge
- » Full Access to Review Material- Printed & Digital
- » 500+ Live Online Classes from ISME
- » Unlimited Personalized Practice Tests
- » Customized Coursework
- » 1250+ flashcards – web and app based
- » 3 Simulated Exams for each of the 4 CPA Sections that mirror the CPA Exam in format
- » Final Review with condensed material, new MCQs and TBS

Learn from the Best Faculty

Highly Experienced Faculty comprising of CPA Practitioners, Industry Leaders, International Scholars & Accomplished Academicians



Your Career as a CPA

As a CPA, you're the holder of a range of skills and in-depth knowledge related to accounting and finance, which means your expertise is valued across all industries and sectors globally. The CPA designation is a stepping stone to whatever business career you can imagine or aspire to be in, and makes you a highly sought-after strategic business partner. In addition to the added value of your skills, becoming a qualified CPA means you have a vested duty in protecting public interest.

The CPA credential is targeted towards a number of roles within an organization, giving you many career opportunities. Here are some of your options:



Excellence in Culture, Education and Leadership



Over 100 companies visit our campus for placements





Apply to ISME

Admission to the PGDM program at ISME is highly competitive. The Admissions team reviews applications on an individual basis looking at both quantitative and qualitative aspects of an applicant's professional and academic background. An elaborate selection process is followed to ensure quality enrolment.

Eligibility CPA License:

- CPA license is issued by the 55 state boards of accountancy of the US that are part of NASBA. Each state board has different eligibility criteria that the aspirant needs to meet to take the US CPA exams.
- Master's Degree in any of the streams of Commerce, Accounting or Finance
- An aspirant needs 120 credits to take the US CPA exams and 150 credits to get his CPA license
- It's considered that one year of university education in India is equal to 30 credits of US education
- In some cases, first division graduates of a three-year degree from NAAC-A accredited universities of India are qualified to take the US CPA exams too.

Eligibility ISME PGDM (Finance) + US CPA:

- Graduate in Commerce / Management / Accounting / CA / CMA / CS / ACCA
- Work Experience of 2 years*

**The Selection Process will include a Written Test for Freshers)*

Selection Process:

Stage 1: Complete Application Form from <https://isme.in/ex/>

Every applicant seeking admission to ISME needs to complete the Application Form online, (<https://admission.isme.in/pg>) attach the required documents and submit the entire application to ISME's Admission Office.

Stage 2: Personal Interview, **Stage 3:** Admission Decision

Admitted candidates are sent the Admission Offer letter. The admission would be final only after the receipt of confirmation of Admission Acceptance from the candidate and the payment of the registration fee. Fee once paid is non-refundable.

Fees & Scholarship

<https://isme.in/ex/>

Bank Loans:

ISME is committed to assisting students in finding the necessary financial resources for their education and will assist in providing the necessary information for obtaining a bank loan. ISME guarantees support towards the student application for the educational loan process.

Campus Address:

International School of Management Excellence,
Sy. No. 88, Chembanhalli, Near Dommasandra Circle,
Sarjapur Road, Bangalore - 562125, Karnataka, India.

Email 1: contactus@isme.in
Email 2: admissions@isme.in
Website: www.isme.in
Blog: blog.isme.in

Facebook: facebook.com/ismeexcel
Instagram: activities.isme
LinkedIn: <https://www.linkedin.com/school/ismebangalore/>

Corporate Office:

International School of Management Excellence,
CAP 1, Export Promotion Industrial Park, Near ITPL,
Whitefield, Bangalore - 560 066, Karnataka, India.

Mobile: +91 88806 12345
Landline 1: +91(80)28019845
Landline 2: +91(80)28019846
Whatsapp: +91 73488 09577